

**FARMGARD**  
ROBUST MACHINERY THAT WORKS



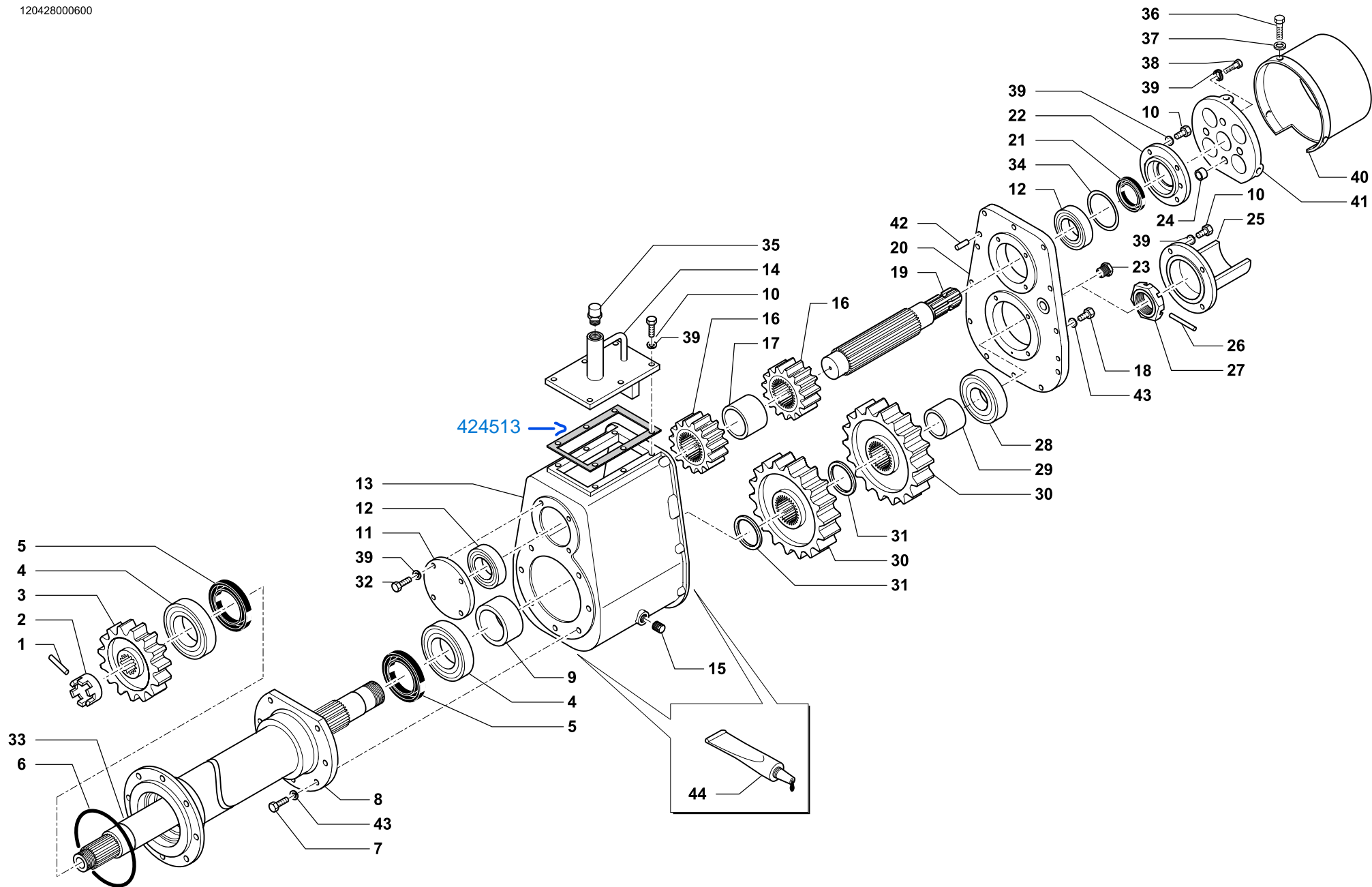
# TIGER 260P TIGER 260PF

CELLI SPARE PARTS REFERENCE GUIDE

---

FOLDING ROTARY TILLER





SCATOLA CAMBIO 2 VELOCITÀ 1000 G/M • 2 SPEED GEARBOX  
 GETRIEBEGEHAUSE 2 GESCHW. • BÔITE 2 VITESSES

Tav. Tab. Taf.	<b>118444</b>	Rev.	<b>00 0201</b>
----------------------	---------------	------	----------------



SCATOLA CAMBIO 2 VELOCITÀ 1000 G/M • 2 SPEED GEARBOX  
GETRIEBEGEHAUSE 2 GESCHW. • BÔITE 2 VITESSES

Tav.  
Tab.  
Taf. **118444**

Rev. **00 0201**

RIF.	N. CODICE	DENOMINAZIONE	DENOMINATION	BEZEICHNUNG	DENOMINATION
1	013034	Spina elastica	Pin	Stift	Goupille
2	423713	Dado corona	Nut	Mutter	Ecrou
3	422647	Ingranaggio Z 18	Gear	Zanhrad	Engrenage
4	003132S	Cuscinetto	Bearing	Kugellager	Roulement
5	007151	Paraolio	Oil seal	Simmerring	Joint d'huile
6	007154	Guarnizione OR	Gasket	Dichtring	Joint
7	014382	Vite	Screw	Schraube	Vis
<b>420</b>	8 461360	Distanziale	Spacer	Distanzstueck	Entretoise
<b>470</b>	461361	Distanziale	Spacer	Distanzstueck	Entretoise
<b>520</b>	461362	Distanziale	Spacer	Distanzstueck	Entretoise
9	422563	Distanziale	Spacer	Distanzstueck	Entretoise
10	014205	Vite	Screw	Schraube	Vis
11	422550	Coperchio	Cover	Deckel	Couvercle
12	003145	Cuscinetto	Bearing	Kugellager	Roulement
13	462150	Scatola cambio	Housing	Gehäuse	Bôte
14	421768	Coperchio	Cover	Deckel	Couvercle
15	022018	Tappo	Plug	Verschluss	Bouchon
16	423285	Ingranaggio Z 13	Gear	Zanhrad	Engrenage
	423270	Ingranaggio Z 14 (standard fresa)	Gear	Zanhrad	Engrenage
	423271	Ingranaggio Z 15 (standard fresa)	Gear	Zanhrad	Engrenage
	423268	Ingranaggio Z 16	Gear	Zanhrad	Engrenage
	423274	Ingranaggio Z 17 (standard frangor)	Gear	Zanhrad	Engrenage
	423275	Ingranaggio Z 18 (standard frangor)	Gear	Zanhrad	Engrenage
	423278	Ingranaggio Z 19	Gear	Zanhrad	Engrenage
	423280	Ingranaggio Z 20	Gear	Zanhrad	Engrenage
17	423798	Distanziale	Spacer	Distanzstueck	Entretoise
18	014213	Vite	Screw	Schraube	Vis
19	423796	Albero	Shaft	Welle	Arbre
20	462152	Coperchio	Cover	Deckel	Couvercle
21	007224	Paraolio	Oil seal	Simmerring	Joint d'huile
22	422551	Coperchio	Cover	Deckel	Couvercle
23	022168	Tappo 1/2	Plug	Verschluss	Bouchon
24	323644	Distanziale	Spacer	Distanzstueck	Entretoise



SCATOLA CAMBIO 2 VELOCITÀ 1000 G/M • 2 SPEED GEARBOX  
GETRIEBEGEHAUSE 2 GESCHW. • BÔITE 2 VITESSES

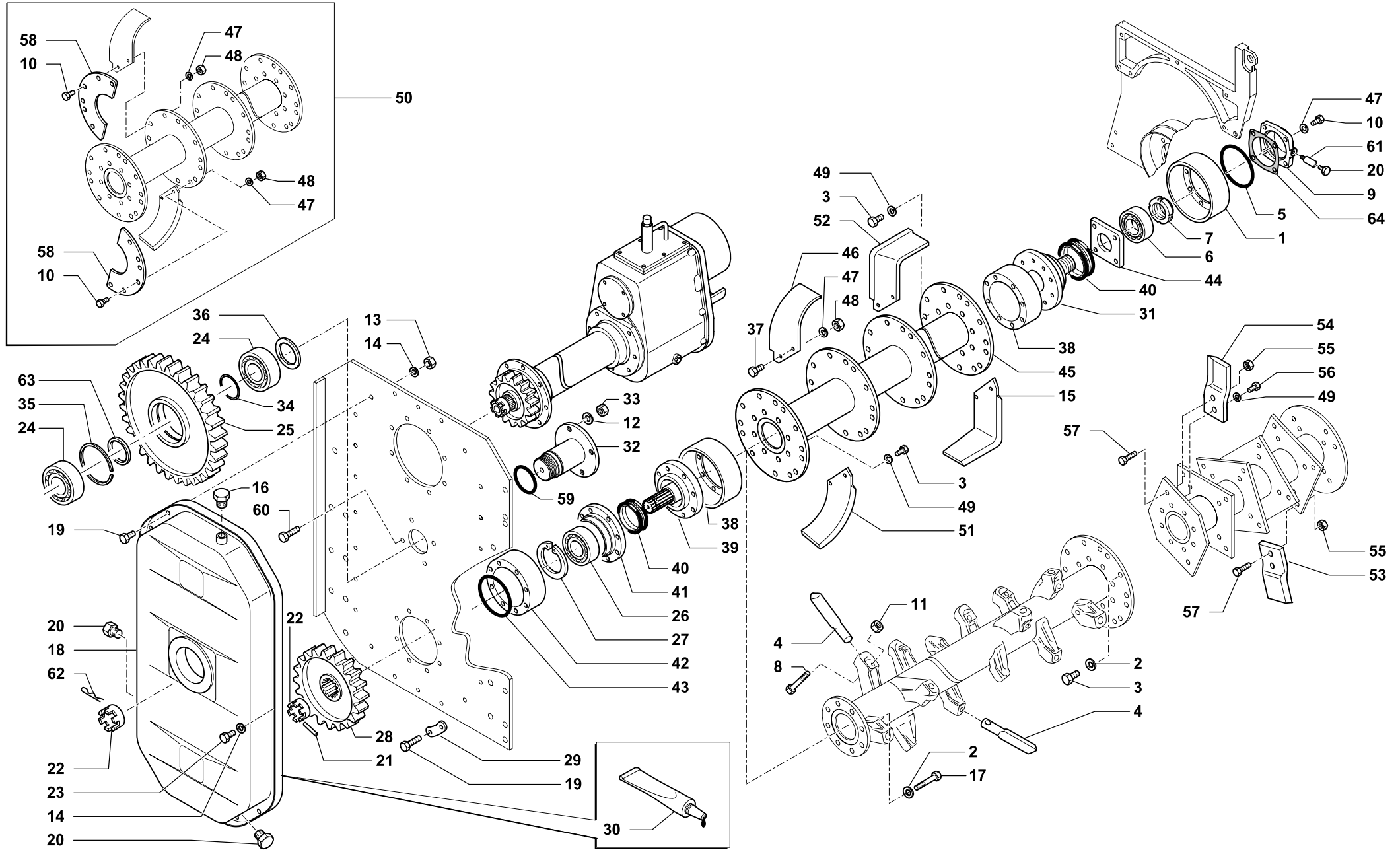
Tav.  
Tab.  
Taf.

118444

Rev.

00 0201

RIF.	N. CODICE	DENOMINAZIONE	DENOMINATION	BEZEICHNUNG	DENOMINATION
25	461494	Coperchio	Cover	Deckel	Couvercle
26	013027	Spina elastica	Pin	Stift	Goupille
27	423714	Dado corona	Nut	Mutter	Ecrou
28	003131S	Cuscinetto	Bearing	Kugellager	Roulement
29	422560	Distanziale	Spacer	Distanzstueck	Entretoise
30	423281	Ingranaggio Z 25	Gear	Zanhrad	Engrenage
	423279	Ingranaggio Z 26	Gear	Zanhrad	Engrenage
	423276	Ingranaggio Z 27 (standard frangor)	Gear	Zanhrad	Engrenage
	423277	Ingranaggio Z 28 (standard frangor)	Gear	Zanhrad	Engrenage
	423269	Ingranaggio Z 29	Gear	Zanhrad	Engrenage
	423272	Ingranaggio Z 30 (standard fresa)	Gear	Zanhrad	Engrenage
	423273	Ingranaggio Z 31 (standard fresa)	Gear	Zanhrad	Engrenage
	423286	Ingranaggio Z 32	Gear	Zanhrad	Engrenage
31	422559	Distanziale	Spacer	Distanzstueck	Entretoise
32	014149	Vite	Screw	Schraube	Vis
<b>420</b>	33	423810	Semiassse	Axle shaft	Demi-axe
<b>470</b>		423811	Semiassse	Axle shaft	Demi-axe
<b>520</b>		423812	Semiassse	Axle shaft	Demi-axe
34	001168	Serie spessori	Set spacers	Beilagscheiben	Serie d'epaisseures
	001169	Serie spessori	Set spacers	Beilagscheiben	Serie d'epaisseures
35	022167	Tappo 3/4 sfiato	Plug	Verschluss	Bouchon
36	014284	Vite	Screw	Schraube	Vis
37	011023	Rondella	Washer	Unterlegscheibe	Rondelle
38	014278	Vite	Screw	Schraube	Vis
39	011002	Grower	Grower	Federscheibe	Grower
40	124505	Cuffia	Guard	Schütz	Protection
41	161500	Supporto porta cuffia	Support	Halterung	Support
42	013055	Spina	Pin	Stift	Goupille
43	011003	Grower	Grower	Federscheibe	Grower
44	094006	Sigillante	Glue	Klebstoff	Colle



TRASMISSIONE • TRANSMISSION  
 UBERTRAGUNG • TRANSMISSION

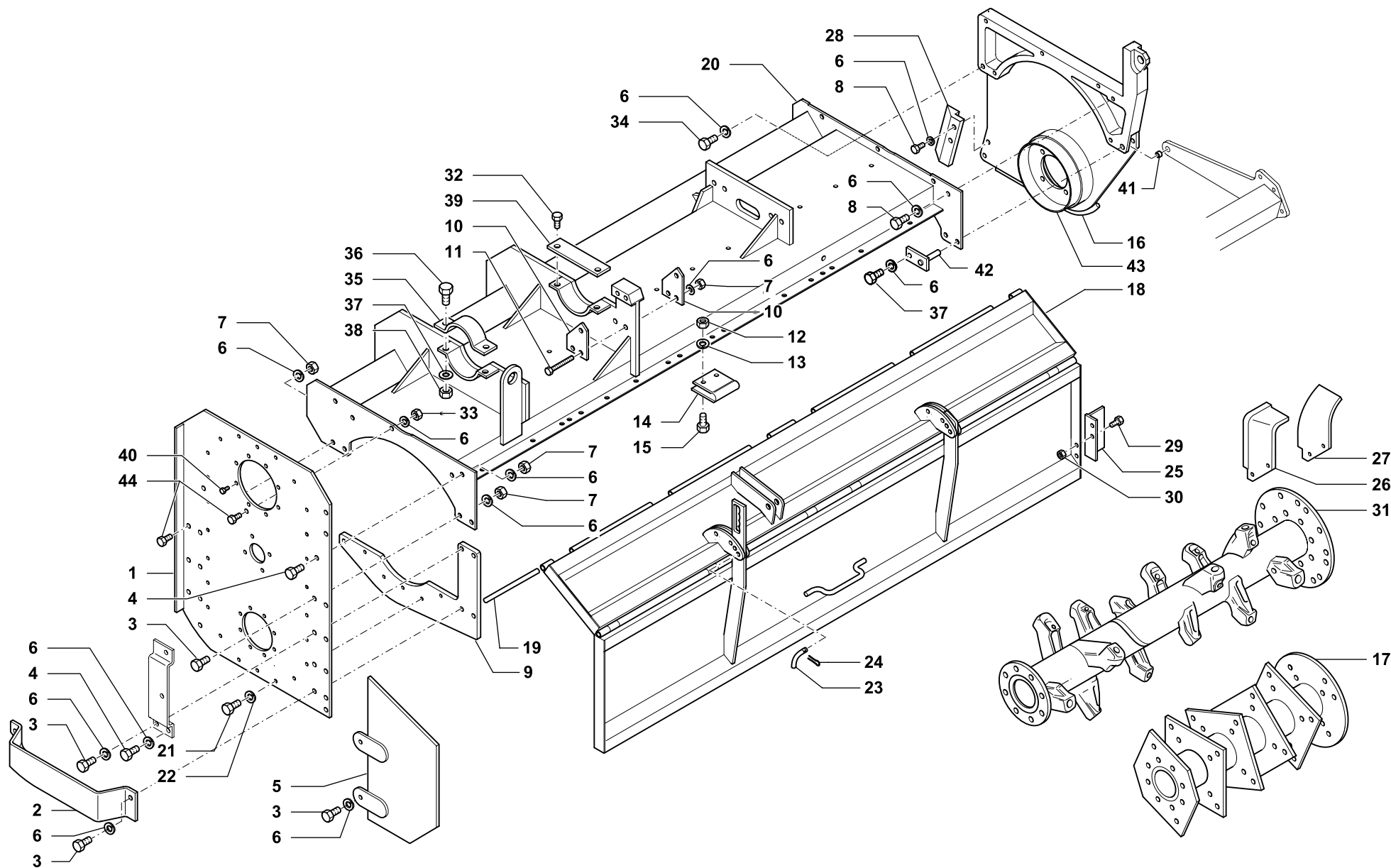
Tav. Tab. Taf.	<b>118445</b>	Rev.	<b>00 0201</b>
----------------------	---------------	------	----------------



RIF.	N. CODICE	DENOMINAZIONE	DENOMINATION	BEZEICHNUNG	DENOMINATION
1	411602	Parapolvere destro	Dust cover	Staubdeckel	Cache anti poussière
2	011005	Grower	Grower	Federscheibe	Grower
3	014200	Vite	Screw	Schraube	Vis
4	422539	Dente	Tine	Zahn	Dent
5	007054	Guarnizione OR	Gasket	Dichtring	Joint
6	003006	Cuscinetto	Bearing	Kugellager	Roulement
7	005011	Ghiera	Ring nut	Nutmutter	Collier
8	014311	Vite	Screw	Schraube	Vis
9	722526	Coperchio	Cover	Deckel	Couvercle
10	014082	Vite	Screw	Schraube	Vis
11	004084	Dado	Nut	Mutter	Ecrou
12	011003	Grower	Grower	Federscheibe	Grower
13	004058	Dado	Nut	Mutter	Ecrou
14	011002	Grower	Grower	Federscheibe	Grower
15	722534	Zappa sinistra squadro	Blade	Messer	Lame
16	022055	Tappo con sfiato 3/4 gas	Plug	Verschluss	Bouchon
17	014087	Vite	Screw	Schraube	Vis
18	461460	Coperchio carter	Cover	Deckel	Couvercle
19	014149	Vite	Screw	Schraube	Vis
20	022009	Tappo 1/4 gas	Plug	Verschluss	Bouchon
21	013027	Spina elastica	Pin	Stift	Goupille
22	723523	Dado a corona	Nut	Mutter	Ecrou
23	014278	Vite	Screw	Schraube	Vis
24	003115S	Cuscinetto	Bearing	Kugellager	Roulement
25	722514	Ingranaggio Z 38	Gear	Zanhrad	Engrenage
26	003133S	Cuscinetto	Bearing	Kugellager	Roulement
27	001034	Anello di arresto	Stop ring	Sperring	Bague d'arret
28	422649	Ingranaggio Z 28	Gear	Zanhrad	Engrenage
29	411511	Rosetta di sicurezza	Washer	Unterlegscheibe	Rondelle
30	094006	Sigillante	Glue	Klebstoff	Colle
31	422621	Fusello destro	Drive hub	Nabe	Fusee
32	423786	Perno	Pivot	Bolzen	Axe
33	004030	Dado	Nut	Mutter	Ecrou



RIF.	N. CODICE	DENOMINAZIONE	DENOMINATION	BEZEICHNUNG	DENOMINATION
34	611713	Serie spessori	Set spacers	Beilagscheiben	Serie d'épaisseurs
35	723518	Distanziale	Spacer	Distanzstueck	Entretoise
36	411863	Distanziale	Spacer	Distanzstueck	Entretoise
37	014004	Vite	Screw	Schraube	Vis
38	411600	Parapolvere	Dust cover	Staubdeckel	Cache anti poussière
39	422620	Fusello sinistro	Hub	Nabe	Disque
40	871504	Tenuta	Oil seal	Simmerring	Joint d'huile
41	422625	Supporto sinistro	L.H. support	L.H. halterung	Support gauche
42	411601	Parapolvere sinistro	Dust cover	Staubdeckel	Cache anti poussière
43	007153	Guarnizione OR	Gasket	Dichtring	Joint
44	422626	Supporto destro	R.H. support	R.H. halterung	Support droite
420	45	461822	Rotore R	Rotor R	Rotor R
470	461823	Rotore R	Rotor R	Rotor R	Rotor R
520	461824	Rotore R	Rotor R	Rotor R	Rotor R
46	722537	Zappa destra elicoidale	Right helicoidal blade	Gekrümmtes Messer R.H.	Lame hélicoïdale droite
47	011004	Grower	Grower	Federscheibe	Grower
48	004004	Dado	Nut	Mutter	Ecrou
49	011005	Grower	Grower	Federscheibe	Grower
50	771561	Kit controflange	Flange kit	Flansch	Flasque
51	722538	Zappa sinistra elicoidale	Left helicoidal blade	Gekrümmtes Messer L.H.	Lame hélicoïdale gauche
52	722533	Zappa destra squadro	Blade	Messer	Lame
53	422631	Coltello sinistro	L.H. Knife	Messer links	Couteau gauche
54	422630	Coltello destro	R.H. Knife	Messer rechts	Couteau droite
55	004072	Dado	Nut	Mutter	Ecrou
56	014222	Vite	Screw	Schraube	Vis
57	014261	Vite	Screw	Schraube	Vis
58	712608	Controflangia	Flange	Flansch	Flasque
59	007011	Guarnizione OR	Gasket	Dichtring	Joint
60	014213	Vite	Screw	Schraube	Vis
61	021082	Colonna	Column	Saeule	Colonnnette
62	002018	Copiglia	Split pin	Hohlstift	Goupille
63	723519	Distanziale	Spacer	Distanzstueck	Entretoise
64	724507	Guarnizione	Gasket	Dichtring	Joint



GRUPPO TELAIO SINISTRO • L.H. FRAME GROUP  
 LINKS RAHMENSGRUPPE • GROUPE CHASSIS GAUCHE



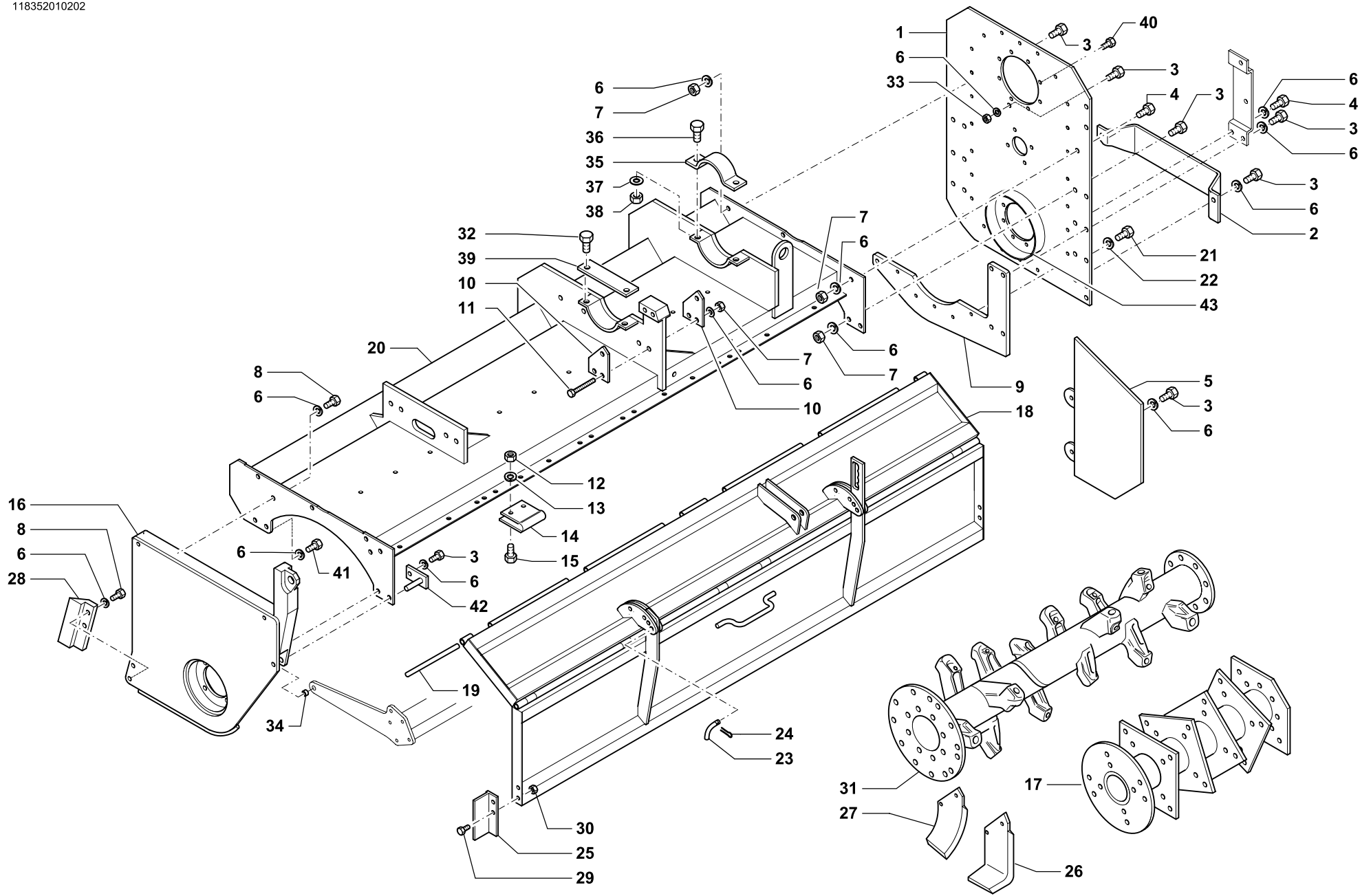
Tav. Tab. Taf.	<b>118351</b>	Rev.	<b>01 0202</b>
----------------------	---------------	------	----------------



RIF.	N. CODICE	DENOMINAZIONE	DENOMINATION	BEZEICHNUNG	DENOMINATION
1	461409	Laterale sinistro esterno	L.H. side shield	L.H. seitlicher schild	Joue gauche
2	461456	Protezione carter	Protection	Schutz	Protection
3	014004	Vite	Screw	Schraube	Vis
4	014019	Vite	Screw	Schraube	Vis
5	461027	Laterale parazole sinistro	L.H. side clod bumper	Links Erdklumpenschutz	Pare-mottes gauche
6	011004	Grower	Grower	Federscheibe	Grower
7	004004	Dado	Nut	Mutter	Ecrou
8	014011	Vite	Screw	Schraube	Vis
9	411860	Piastra	Plate	Plate	Platte
10	411534	Supporto	Support	Halterung	Support
11	014201	Vite	Screw	Schraube	Vis
12	004030	Dado	Nut	Mutter	Ecrou
13	011003	Grower	Grower	Federscheibe	Grower
14	411604	Cerniera	Hinge	Scharnier	Charniere
15	014384	Vite	Screw	Schraube	Vis
16	461330	Laterale sinistro interno	L.H. side shield	L.H. seitlicher schild	Joue gauche
<b>420</b>	17	461425	Rotore a coltelli	Knife type drum	Rotor a couteaux
<b>470</b>		461426	Rotore a coltelli	Knife type drum	Rotor a couteaux
<b>520</b>		461427	Rotore a coltelli	Knife type drum	Rotor a couteaux
<b>420</b>	18	466444	Scudo mobile sinistro	L.H. rear shield	Tablier arriere gauche
<b>470</b>		466445	Scudo mobile sinistro	L.H. rear shield	Tablier arriere gauche
<b>520</b>		466446	Scudo mobile sinistro	L.H. rear shield	Tablier arriere gauche
<b>420</b>	19	423815	Perno cerniera ventola	Pivot	Axe
<b>470</b>		423816	Perno cerniera ventola	Pivot	Axe
<b>520</b>		423817	Perno cerniera ventola	Pivot	Axe
<b>420</b>	20	468412	Telaio sinistro	L.H. frame	Chassis gauche
<b>470</b>		468413	Telaio sinistro	L.H. frame	Chassis gauche
<b>520</b>		468414	Telaio sinistro	L.H. frame	Chassis gauche
	21	014150	Vite	Screw	Vis
	22	011002	Grower	Grower	Grower
	23	423558	Perno molla	Pivot	Axe
	24	002014	Copiglia	Split pin	Goupille
	25	461318	Prolunga sinistro	L.H. extension	Rallonge gauche
	26	722553	Zappa a squadro speciale sinistra	Special L-shaped blade, LH	Lame équerre spéciale, gauche



RIF.	N. CODICE	DENOMINAZIONE	DENOMINATION	BEZEICHNUNG	DENOMINATION	
27	722555	Zappa curva speciale sinistra	Special C-shaped blade, LH	Sondersichelmesser, links	Lame hélicoïdale spéciale, gauche	
28	412376	Lama centrale sinistra	Central blade, LH	Mittelmesser, links	Lame centrale, gauche	
29	014382	Vite	Screw	Schraube	Vis	
30	004079	Dado	Nut	Mutter	Ecrou	
<b>420</b>	31	461390	Rotore denti sinistro	L.H. TineRotor	L.H. ZinkenRotor	Rotor a dents gauche
<b>470</b>		461391	Rotore denti sinistro	L.H. TineRotor	L.H. ZinkenRotor	Rotor a dents gauche
<b>520</b>		461392	Rotore denti sinistro	L.H. TineRotor	L.H. ZinkenRotor	Rotor a dents gauche
32	014240	Vite	Screw	Schraube	Vis	
33	004041	Dado	Nut	Mutter	Ecrou	
34	014103	Vite	Screw	Schraube	Vis	
35	411852	Supporto	Support	Halterung	Support	
36	014198	Vite	Screw	Schraube	Vis	
37	010006	Rondella	Washer	Scheibe	Rondelle	
38	004072	Dado	Nut	Mutter	Ecrou	
39	411853	Staffa	Flask	Pratze	Bride	
40	014254	Vite	Screw	Schraube	Vis	
41	423769	Boccola	Bush	Buchse	Bague	
42	461498	Perno fulcro	Pivot	Bolzen	Axe	
43	423340	Anello raschiaerba (da saldare)	Dust cover (to be welded)	Halterung (zum schweissen)	Parapoussiere (a' souder)	
44	014212	Vite	Screw	Schraube	Vis	



**GRUPPO TELAIO DESTRO • R.H. FRAME GROUP**  
**RECHTS RAHMENSGRUPPE • GROUPE CHASSIS DROITE**



Tav. Tab. Taf.	<b>118352</b>	Rev.	<b>01 0202</b>
----------------------	---------------	------	----------------



RIF.	N. CODICE	DENOMINAZIONE	DENOMINATION	BEZEICHNUNG	DENOMINATION	
1	461411	Laterale destro esterno	R.H. side shield	R.H. seitlicher schild	Joue droite	
2	461445	Protezione carter	Protection	Schutz	Protection	
3	014004	Vite	Screw	Schraube	Vis	
4	014019	Vite	Screw	Schraube	Vis	
5	461026	Laterale parazole destro	R.H. side clod bumper	R.H. Erdklumpenschutz	Pare-mottes droite	
6	011004	Grower	Grower	Federscheibe	Grower	
7	004004	Dado	Nut	Mutter	Ecrou	
8	014011	Vite	Screw	Schraube	Vis	
9	411860	Piastra	Plate	Plate	Platte	
10	411534	Supporto	Support	Halterung	Support	
11	014201	Vite	Screw	Schraube	Vis	
12	004030	Dado	Nut	Mutter	Ecrou	
13	011003	Grower	Grower	Federscheibe	Grower	
14	411604	Cerniera	Hinge	Scharnier	Charniere	
15	014145	Vite	Screw	Schraube	Vis	
16	461331	Laterale destro interno	R.H. side shield	R.H. seitlicher schild	Joue droite	
<b>420</b>	17	461425	Rotore a coltelli	Knife type drum	Messerwelle	Rotor a couteaux
<b>470</b>		461426	Rotore a coltelli	Knife type drum	Messerwelle	Rotor a couteaux
<b>520</b>		461427	Rotore a coltelli	Knife type drum	Messerwelle	Rotor a couteaux
<b>420</b>	18	466434	Scudo mobile destro	R.H. rear shield	R.H. bodenklappe	Tablier arriere droite
<b>470</b>		466435	Scudo mobile destro	R.H. rear shield	R.H. bodenklappe	Tablier arriere droite
<b>520</b>		466436	Scudo mobile destro	R.H. rear shield	R.H. bodenklappe	Tablier arriere droite
<b>420</b>	19	423815	Perno cerniera ventola	Pivot	Bolzen	Axe
<b>470</b>		423816	Perno cerniera ventola	Pivot	Bolzen	Axe
<b>520</b>		423817	Perno cerniera ventola	Pivot	Bolzen	Axe
<b>420</b>	20	468402	Telaio destro	R.H. frame	R.H. Rahmen	Chassis droite
<b>470</b>		468403	Telaio destro	R.H. frame	R.H. Rahmen	Chassis droite
<b>520</b>		468404	Telaio destro	R.H. frame	R.H. Rahmen	Chassis droite
	21	014150	Vite	Screw	Schraube	Vis
	22	011002	Grower	Grower	Federscheibe	Grower
	23	423558	Perno molla	Pivot	Bolzen	Axe
	24	002014	Copiglia	Split pin	Hohlstif	Goupille
	25	461317	Prolunga destro	R.H. extension	R.H. Verlängerungsstück	Rallonge droite
	26	722552	Zappa a squadro speciale destra	Special L-shaped blade, RH	Sonderwinkelmesser, rechts	Lame équerre spéciale, droite



GRUPPO TELAIO DESTRO • R.H. FRAME GROUP  
RECHTS RAHMENSGRUPPE • GROUPE CHASSIS DROITE

Tav.  
Tab.  
Taf.

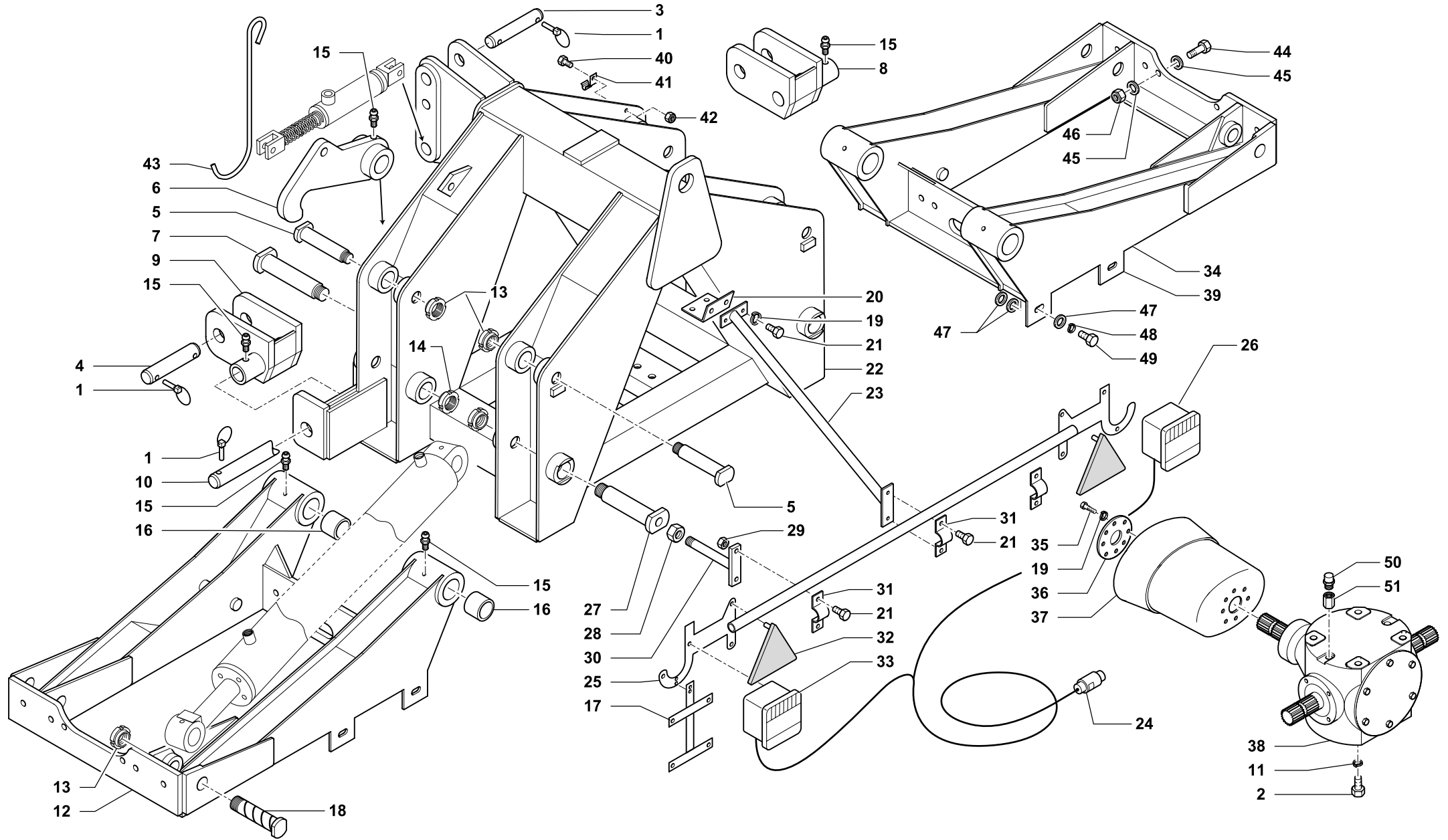
118352

Rev.

01

0202

RIF.	N. CODICE	DENOMINAZIONE	DENOMINATION	BEZEICHNUNG	DENOMINATION
27	722554	Zappa curva speciale destra	Special C-shaped blade, RH	Sondersichelmesser, rechts	Lame hélicoïdale spéciale, droite
28	412377	Lama centrale destra	Central blade, RH	Mittelmesser, rechts	Lame centrale, droite
29	014382	Vite	Screw	Schraube	Vis
30	004079	Dado	Nut	Mutter	Ecrou
<b>420</b>	31	461395	Rotore denti destro	R.H. ZinkenRotor	Rotor a dents droite
<b>470</b>		461396	Rotore denti destro	R.H. ZinkenRotor	Rotor a dents droite
<b>520</b>		461397	Rotore denti destro	R.H. ZinkenRotor	Rotor a dents droite
32	014240	Vite	Screw	Schraube	Vis
33	004041	Dado	Nut	Mutter	Ecrou
34	423769	Boccola	Bush	Buchse	Bague
35	411852	Supporto	Support	Halterung	Support
36	014198	Vite	Screw	Schraube	Vis
37	010006	Rondella	Washer	Scheibe	Rondelle
38	004072	Dado	Nut	Mutter	Ecrou
39	411853	Staffa	Flask	Pratze	Bride
40	014213	Vite	Screw	Schraube	Vis
41	014103	Vite	Screw	Schraube	Vis
42	461498	Perno fulcro	Pivot	Bolzen	Axe
43	423340	Anello raschiaerba (da saldare)	Dust cover (to be welded)	Halterung (zum schweissen)	Parapoussiere (a' souder)



TELAIO CENTRALE • CENTER FRAME  
MITTELRAHMEN • CHASSIS CENTRAL

Tav. Tab. Taf.	<b>118353</b>	Rev.	<b>00 0201</b>
----------------------	---------------	------	----------------



TELAIO CENTRALE • CENTER FRAME  
MITTELRAHMEN • CHASSIS CENTRAL

Tav.  
Tab.  
Taf.

118353

Rev.

00 0201

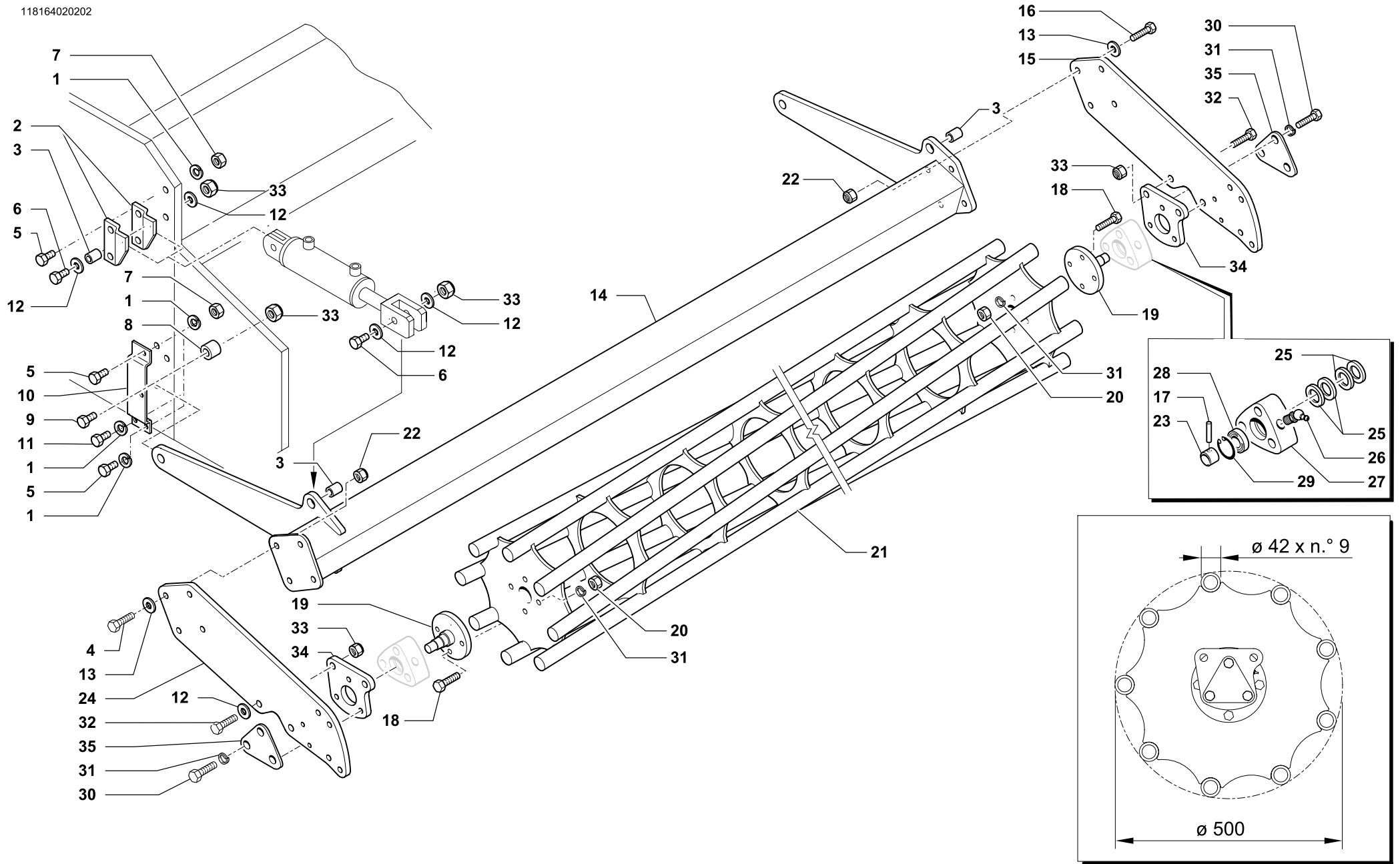
RIF.	N. CODICE	DENOMINAZIONE	DENOMINATION	BEZEICHNUNG	DENOMINATION
1	013011	Spina a scatto	Pin	Stift	Goupille
2	014326	Vite	Screw	Schraube	Vis
3	723630	Perno attacco 3° punto sup. (3° cat.)	Upper 3-point hitch pivot (cat.III)	Bolzen j. oberen 3-Pkt.-Hitch (Kat.III)	Axe attelage 3°-point sup. (3°cat.)
	621723	Perno attacco 3° punto sup. (2° cat.)	Upper 3-point hitch pivot (cat.II)	Bolzen j. oberen 3-Pkt.-Hitch (Kat.II)	Axe attelage 3°-point sup. (2°cat.)
4	723606	Perno attacco 3° punto inf. (3° cat.)	Lower 3-point hitch pivot (cat.III)	Bolzen j. unteren 3-Pkt.-Hitch (Kat.III)	Axe attelage 3°-point inf. (3°cat.)
	621724	Perno attacco 3° punto inf. (2° cat.)	Lower 3-point hitch pivot (cat.II)	Bolzen j. unteren 3-Pkt.-Hitch (Kat.II)	Axe attelage 3°-point inf. (2°cat.)
5	623744	Perno	Pivot	Bolzen	Axe
6	662523	Gancio di bloccaggio	Hook	Haken	Crochet
7	623743	Perno	Pivot	Bolzen	Axe
8	461311	Attacco oscillante destro (3° cat.)	Swinging arm, r. (cat.III)	Pendelnder Anschluss, r. (Kat.III)	Attelage oscillant DX (3°cat.)
	461335	Attacco oscillante destro (2° cat.)	Swinging arm, r. (cat.II)	Pendelnder Anschluss, r. (Kat.II)	Attelage oscillant DX (2°cat.)
9	461312	Attacco oscillante sinistro (3° cat.)	Swinging arm, l. (cat.III)	Pendelnder Anschluss, l. (Kat.III)	Attelage oscillant SX (3°cat.)
	461336	Attacco oscillante sinistro (2° cat.)	Swinging arm, l. (cat.II)	Pendelnder Anschluss, l. (Kat.II)	Attelage oscillant SX (2°cat.)
10	621735	Perno	Pivot	Bolzen	Axe
11	011005	Grower	Grower	Federscheibe	Grower
12	461486	Telaio sinistro	Left frame	Links Rahmen	Chassis gauche
13	005007	Ghiera	Ring nut	Nutmutter	Collier
14	005008	Ghiera	Ring nut	Nutmutter	Collier
15	008007	Ingrassatore	Grease nipple	Fettbuechse	Graisneur
16	523603	Bronzina	Bushing	Buchse	Douille
17	027007	Portatarga	Number plate holder	Schildrahmen	Porte plaque
18	423768	Perno	Pivot	Bolzen	Axe
19	011002	Grower	Grower	Federscheibe	Grower
20	662517	Piastra	Plate	Teller	Plateau
21	014149	Vite	Screw	Schraube	Vis
22	662518	Telaio centrale	Center frame	Mittelrahmen	Chassis central
23	461093	Barra di attacco centrale	Bar	Stange	Barre
24	027005	Cavo alimentazione	Power supply wire	Zufuhrkabel	Cable alimentation
25	027000	Barra portafanali	Bar	Stange	Barre
26	027004	Fanale destro	Right light	Rechts Scheinwerfer	Droit Feu
27	623748	Perno	Pivot	Bolzen	Axe
28	004069	Dado	Nut	Mutter	Ecrou
29	004084	Dado	Nut	Mutter	Ecrou



TELAIO CENTRALE • CENTER FRAME  
MITTELRAHMEN • CHASSIS CENTRAL

Tav. 118353 Rev. 00 0201  
Tab. Taf.

RIF.	N. CODICE	DENOMINAZIONE	DENOMINATION	BEZEICHNUNG	DENOMINATION
30	461094	Attacco barra portafanali	Bar connection	Stangenanschluss	Attelage barre
31	612941	Piastra ferma tubo	Plate	Teller	Plateau
32	027002	Catadiottro	Reflector	Rückstrahler	Catadioptré
33	027003	Fanale sinistro	Left Light	Links Scheinwerfer	Gauche Feu
34	461485	Telaio destro	Right frame	Rechts Rahmen	Chassis droit
35	014278	Vite	Screw	Schraube	Vis
36	612727	Flangia	Flange	Flansch	Flasque
37	099140	Cuffia	Guard	Schütz	Protection
38	471441	Scatola centrale	Housing	Gehäuse	Bôte
39	412250	Piastrina (a saldare)	Plate (to be welded)	Teller (zum schweissen)	Plateau (à souder)
40	014036	Vite	Screw	Schraube	Vis
41	611728	Staffa gancio	Flask	Pratze	Bride
42	004055	Dado	Nut	Mutter	Ecrou
43	523652	Gancio cardano 402 mm	Drive shaft hook	Gelenkwelle aufhaengung	Crochet
43	523654	Gancio cardano 492 mm	Drive shaft hook	Gelenkwelle aufhaengung	Crochet
44	014398	Vite	Screw	Schraube	Vis
45	010006	Rondella	Washer	Scheibe	Rondelle
46	004072	Dado	Nut	Mutter	Ecrou
47	010013	Rondella	Washer	Scheibe	Rondelle
48	011004	Grower	Grower	Federscheibe	Grower
49	014397	Vite	Screw	Schraube	Vis
50	022176	Tappo 3/8 gas	Plug	Verschluss	Boucho
51	021060	Colonna	Column	Saeule	Colonnnette
	<b>671812</b>	Kit attacco oscillante (2° cat.)	Swinging arm kit (cat.II)	Teile f. pendelnden Anschluss (Kat.II)	Kit attelage oscillant (2° cat.)





RULLO GABBIA Ø 500 SINISTRO • L.H. CAGE ROLLER Ø 500  
KÄFIGWALZE Ø 500 LINKS • ROULEAU CAGE Ø 500 GAUCHE

Tav.  
Tab.  
Taf.

118164

Rev.

02 0202

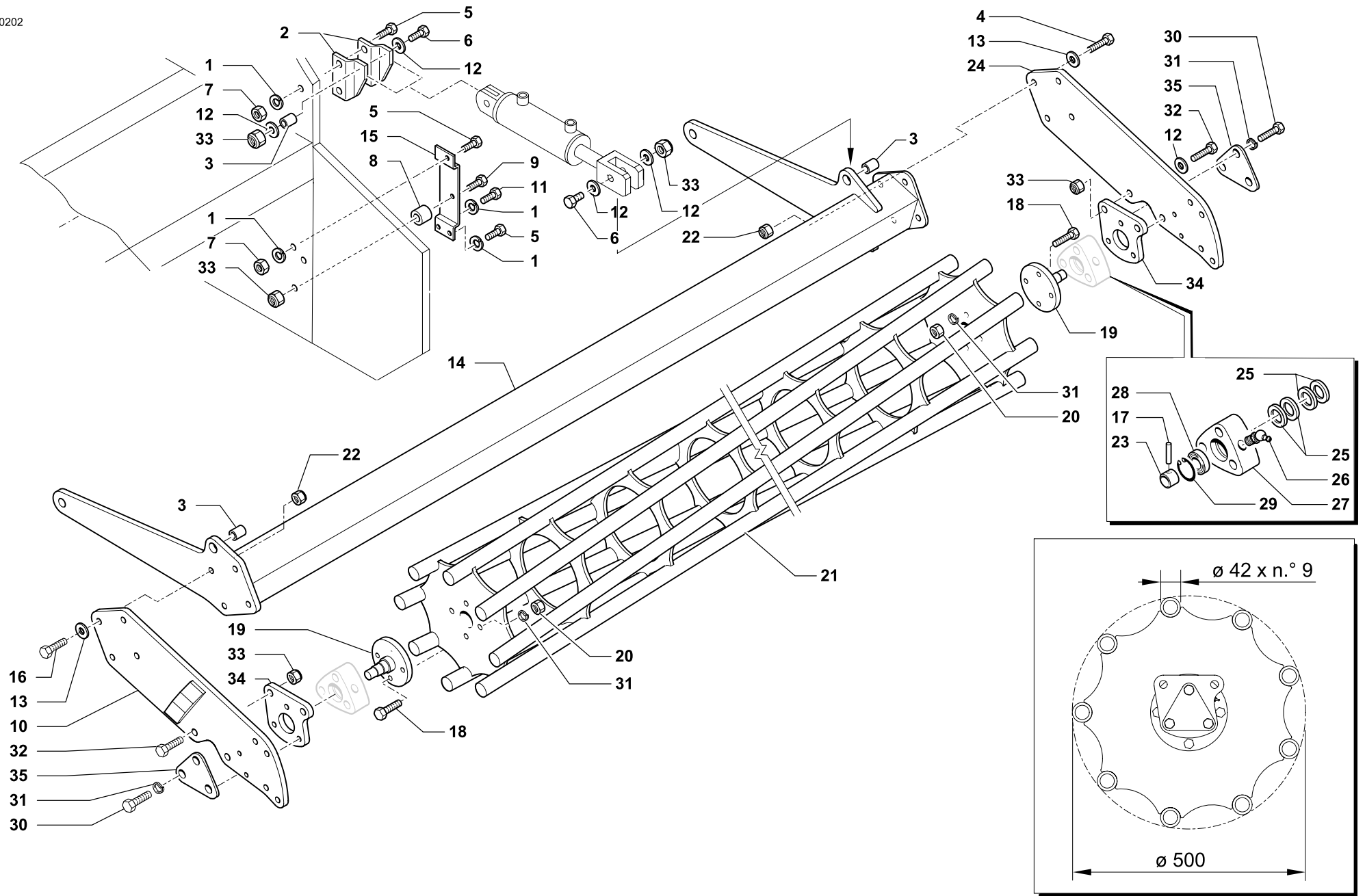
RIF.	N. CODICE	DENOMINAZIONE	DENOMINATION	BEZEICHNUNG	DENOMINATION
1	011004	Grower	Grower	Federscheibe	Grower
2	411528	Piastra	Plate	Plate	Platte
3	423833	Distanziale	Spacer	Distanzstueck	Entretoise
4	014082	Vite	Screw	Schraube	Vis
5	014019	Vite	Screw	Schraube	Vis
6	014398	Vite	Screw	Schraube	Vis
7	004004	Dado	Nut	Mutter	Ecrou
8	423769	Boccola	Bush	Buchse	Bague
9	014399	Vite	Screw	Schraube	Vis
10	423791	Taschetta rullo sinistra	L.H. Attach. arm fulcrum lug	Links Befestigungsarm	Fixation de bras gauche
11	014004	Vite	Screw	Schraube	Vis
12	010006	Rondella	Washer	Unterlegscheibe	Rondelle
13	010002	Rondella	Washer	Unterlegscheibe	Rondelle
<b>420</b>	961504	Barra rinforzo rullo SX	Bar	Stab	Barre
<b>470</b>	961505	Barra rinforzo rullo SX	Bar	Stab	Barre
<b>520</b>	961506	Barra rinforzo rullo SX	Bar	Stab	Barre
15	961649	Braccio interno destro	Arm	Arm	Bras
16	014176	Vite	Screw	Schraube	Vis
17	013019	Spina	Pin	Stift	Goupille
18	014254	Vite	Screw	Schraube	Vis
19	661401	Fusello	Stub axle	Flansch	Fusee
20	004030	Dado	Nut	Mutter	Ecrou
<b>420</b>	961951	Rullo gabbia	Cage roller	Käfigwalze	Rouleau cage
<b>470</b>	961952	Rullo gabbia	Cage roller	Käfigwalze	Rouleau cage
<b>520</b>	961953	Rullo gabbia	Cage roller	Käfigwalze	Rouleau cage
22	004054	Dado	Nut	Mutter	Ecrou
23	661403	Bussola	Bush	Buchse	Bague
24	912687	Braccio	Arm	Arm	Bras
25	099018	Gruppo parapolvere	Dust cover	Staubdeckel	Cache anti poussière
26	008005	Ingrassatore	Grease nipple	Fettbuechse	Graisser
27	421604	Supporto	Support	Halterung	Support
28	003051	Cuscinetto	Bearing	Kugellager	Roulement
29	001006	Anello di arresto	Stop ring	Sperring	Bague d'arret



RULLO GABBIA Ø 500 SINISTRO • L.H. CAGE ROLLER Ø 500  
KÄFIGWALZE Ø 500 LINKS • ROULEAU CAGE Ø 500 GAUCHE

Tav. Tab. Taf.	<b>118164</b>	Rev.	<b>02</b>	<b>0202</b>
----------------------	---------------	------	-----------	-------------

RIF.	N. CODICE	DENOMINAZIONE	DENOMINATION	BEZEICHNUNG	DENOMINATION
30	014145	Vite	Screw	Schraube	Vis
31	011003	Grower	Grower	Federscheibe	Grower
32	014192	Vite	Screw	Schraube	Vis
33	004072	Dado	Nut	Mutter	Ecrou
34	661402	Piastra	Plate	Plate	Platte
35	612372	Chiusura	Plate	Plate	Platte



RULLO GABBIA Ø 500 DESTRO • R.H. CAGE ROLLER Ø 500  
 KÄFIGWALZE Ø 500 RECHTS • ROULEAU CAGE Ø 500 DROITE

Tav. Tab. Taf.	<b>118165</b>	Rev.	<b>02 0202</b>
----------------------	---------------	------	----------------



RULLO GABBIA Ø 500 DESTRO • R.H. CAGE ROLLER Ø 500  
KÄFIGWALZE Ø 500 RECHTS • ROULEAU CAGE Ø 500 DROITE

Tav.  
Tab.  
Taf.

118165

Rev.

02 0202

RIF.	N. CODICE	DENOMINAZIONE	DENOMINATION	BEZEICHNUNG	DENOMINATION	
1	011004	Grower	Grower	Federscheibe	Grower	
2	411529	Piastra	Plate	Plate	Platte	
3	412833	Distanziale	Spacer	Distanzstueck	Entretoise	
4	014082	Vite	Screw	Schraube	Vis	
5	014019	Vite	Screw	Schraube	Vis	
6	014398	Vite	Screw	Schraube	Vis	
7	004004	Dado	Nut	Mutter	Ecrou	
8	423769	Boccola	Bush	Buchse	Bague	
9	014399	Vite	Screw	Schraube	Vis	
10	961648	Braccio interno sinistro	Arm	Arm	Bras	
11	014004	Vite	Screw	Schraube	Vis	
12	010006	Rondella	Washer	Unterlegscheibe	Rondelle	
13	010002	Rondella	Washer	Unterlegscheibe	Rondelle	
<b>420</b>	14	961507	Barra rinforzo rullo DX	Bar	Stab	Barre
<b>470</b>		961508	Barra rinforzo rullo DX	Bar	Stab	Barre
<b>520</b>		961509	Barra rinforzo rullo DX	Bar	Stab	Barre
15	423790	Taschetta rullo destra	R.H. Attach. arm fulcrum lug	Rechts Befestigungsarm	Fixation de bras droit	
16	014176	Vite	Screw	Schraube	Vis	
17	013019	Spina	Pin	Stift	Goupille	
18	014254	Vite	Screw	Schraube	Vis	
19	661401	Fusello	Stub axle	Flansch	Fusee	
20	004030	Dado	Nut	Mutter	Ecrou	
<b>420</b>	21	961951	Rullo gabbia	Cage roller	Käfigwalze	Rouleau cage
<b>470</b>		961952	Rullo gabbia	Cage roller	Käfigwalze	Rouleau cage
<b>520</b>		961953	Rullo gabbia	Cage roller	Käfigwalze	Rouleau cage
22	004054	Dado	Nut	Mutter	Ecrou	
23	661403	Bussola	Bush	Buchse	Bague	
24	912687	Braccio	Arm	Arm	Bras	
25	099018	Gruppo parapolvere	Dust cover	Staubdeckel	Cache anti poussière	
26	008005	Ingrassatore	Grease nipple	Fettbuechse	Graisser	
27	421604	Supporto	Support	Halterung	Support	
28	003051	Cuscinetto	Bearing	Kugellager	Roulement	
29	001006	Anello di arresto	Stop ring	Sperring	Bague d'arret	



RULLO GABBIA Ø 500 DESTRO • R.H. CAGE ROLLER Ø 500  
KÄFIGWALZE Ø 500 RECHTS • ROULEAU CAGE Ø 500 DROITE

Tav.  
Tab.  
Taf.

118165

Rev.

02

0202

RIF.	N. CODICE	DENOMINAZIONE	DENOMINATION	BEZEICHNUNG	DENOMINATION
30	014145	Vite	Screw	Schraube	Vis
31	011003	Grower	Grower	Federscheibe	Grower
32	014192	Vite	Screw	Schraube	Vis
33	004072	Dado	Nut	Mutter	Ecrou
34	661402	Piastra	Plate	Plate	Platte
35	612372	Chiusura	Plate	Plate	Platte





RULLO PACKER Ø 406 SINISTRO • L.H. PACKER ROLLER Ø 406  
PACKERWALZE Ø 406 LINKS • ROULEAU PACKER Ø 406 GAUCHE

Tav.  
Tab.  
Taf.

118162

Rev.

02 0202

RIF.	N. CODICE	DENOMINAZIONE	DENOMINATION	BEZEICHNUNG	DENOMINATION
1	011004	Grower	Grower	Federscheibe	Grower
2	411528	Piastra	Plate	Plate	Platte
3	423833	Distanziale	Spacer	Distanzstueck	Entretoise
4	014082	Vite	Screw	Schraube	Vis
5	014019	Vite	Screw	Schraube	Vis
6	014398	Vite	Screw	Schraube	Vis
7	004004	Dado	Nut	Mutter	Ecrou
8	423769	Boccola	Bush	Buchse	Bague
9	014399	Vite	Screw	Schraube	Vis
10	423791	Taschetta rullo sinistra	L.H. Attach. arm fulcrum lug	Links Befestigungsarm	Fixation de bras gauche
11	014004	Vite	Screw	Schraube	Vis
12	961649	Braccio interno destro	Arm	Arm	Bras
13	010002	Rondella	Washer	Unterlegscheibe	Rondelle
<b>420</b>	961504	Barra rinforzo rullo SX	Bar	Stab	Barre
<b>470</b>	961505	Barra rinforzo rullo SX	Bar	Stab	Barre
<b>520</b>	961506	Barra rinforzo rullo SX	Bar	Stab	Barre
15	010002	Rondella	Washer	Unterlegscheibe	Rondelle
16	911601	Raschietto	Scraper	Schaber	Racloir
17	013019	Spina	Pin	Stift	Goupille
18	014145	Vite	Screw	Schraube	Vis
19	661401	Fusello	Stub axle	Flansch	Fusee
20	412782	Dente (da saldare)	Tine (to be welded)	Zahn (zum schweissen)	Dent (à souder)
<b>420</b>	961921	Rullo packer	Packer roller	Packerwalze	Rouleau packer
<b>470</b>	961922	Rullo packer	Packer roller	Packerwalze	Rouleau packer
<b>520</b>	961923	Rullo packer	Packer roller	Packerwalze	Rouleau packer
<b>420</b>	961911	Barra porta raschietti	Scratcher support	Schaberhalter	Porte-racloir
<b>470</b>	961912	Barra porta raschietti	Scratcher support	Schaberhalter	Porte-racloir
<b>520</b>	961913	Barra porta raschietti	Scratcher support	Schaberhalter	Porte-racloir
23	911629	Raschietto laterale SX	Scraper	Schaber	Racloir
24	912687	Braccio	Arm	Arm	Bras
25	099018	Gruppo parapolvere	Dust cover	Staubdeckel	Cache anti poussière
26	008005	Ingrassatore	Grease nipple	Fettbuechse	Graisneur
27	421604	Supporto	Support	Halterung	Support



RULLO PACKER Ø 406 SINISTRO • L.H. PACKER ROLLER Ø 406  
PACKERWALZE Ø 406 LINKS • ROULEAU PACKER Ø 406 GAUCHE

Tav.  
Tab.  
Taf.

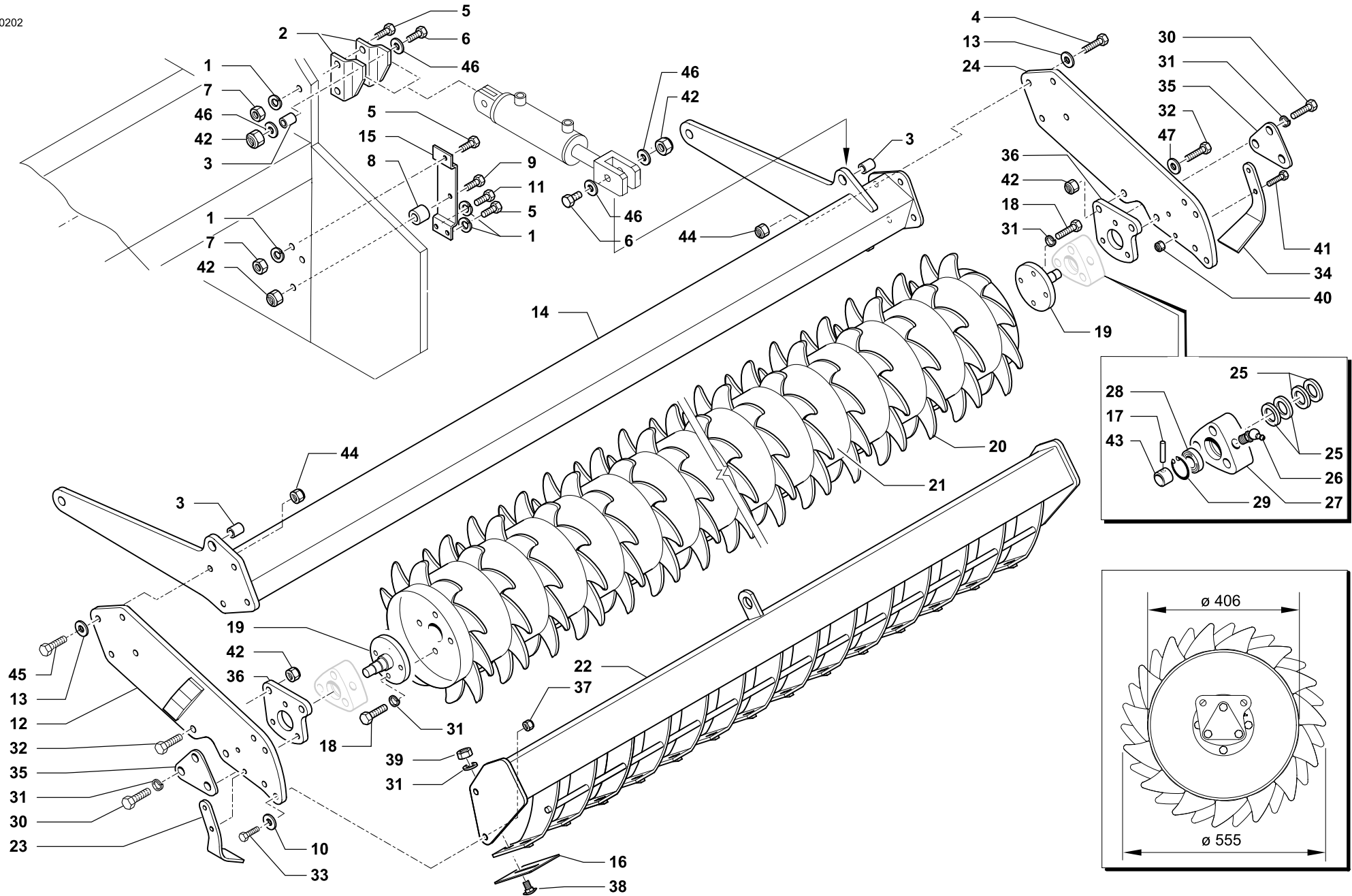
118162

Rev.

02

0202

RIF.	N. CODICE	DENOMINAZIONE	DENOMINATION	BEZEICHNUNG	DENOMINATION
28	003051	Cuscinetto	Bearing	Kugellager	Roulement
29	001006	Anello di arresto	Stop ring	Sperring	Bague d'arret
30	014145	Vite	Screw	Schraube	Vis
31	011003	Grower	Grower	Federscheibe	Grower
32	014192	Vite	Screw	Schraube	Vis
33	014019	Vite	Screw	Schraube	Vis
34	911630	Raschietto laterale DX	Scraper	Schaber	Racloir
35	612372	Chiusura	Plate	Plate	Platte
36	661402	Piastra	Plate	Plate	Platte
37	004054	Dado	Nut	Mutter	Ecrou
38	014386	Vite	Screw	Schraube	Vis
39	004003	Dado	Nut	Mutter	Ecrou
40	004084	Dado	Nut	Mutter	Ecrou
41	014214	Vite	Screw	Schraube	Vis
42	004072	Dado	Nut	Mutter	Ecrou
43	661403	Bussola	Bush	Buchse	Bague
44	004054	Dado	Nut	Mutter	Ecrou
45	014176	Vite	Screw	Schraube	Vis
46	010006	Rondella	Washer	Unterlegscheibe	Rondelle



RULLO PACKER Ø 406 DESTRO • R.H. PACKER ROLLER Ø 406  
 PACKERWALZE Ø 406 RECHTS • ROULEAU PACKER Ø 406 DROITE





RULLO PACKER Ø 406 DESTRO • R.H. PACKER ROLLER Ø 406  
PACKERWALZE Ø 406 RECHTS • ROULEAU PACKER Ø 406 DROITE

Tav.  
Tab.  
Taf.

118163

Rev.

02 0202

RIF.	N. CODICE	DENOMINAZIONE	DENOMINATION	BEZEICHNUNG	DENOMINATION
1	011004	Grower	Grower	Federscheibe	Grower
2	411529	Piastra	Plate	Plate	Platte
3	423833	Distanziale	Spacer	Distanzstueck	Entretoise
4	014082	Vite	Screw	Schraube	Vis
5	014019	Vite	Screw	Schraube	Vis
6	014398	Vite	Screw	Schraube	Vis
7	004004	Dado	Nut	Mutter	Ecrou
8	423769	Boccola	Bush	Buchse	Bague
9	014399	Vite	Screw	Schraube	Vis
10	010002	Rondella	Washer	Unterlegscheibe	Rondelle
11	014004	Vite	Screw	Schraube	Vis
12	961648	Braccio interno sinistro	Arm	Arm	Bras
13	010002	Rondella	Washer	Unterlegscheibe	Rondelle
<b>420</b>	961507	Barra rinforzo rullo DX	Bar	Stab	Barre
<b>470</b>	961508	Barra rinforzo rullo DX	Bar	Stab	Barre
<b>520</b>	961509	Barra rinforzo rullo DX	Bar	Stab	Barre
15	423790	Taschetta rullo destra	R.H. Attach. arm fulcrum lug	Rechts Befestigungsarm	Fixation de bras droit
16	911601	Raschietto	Scraper	Schaber	Racloir
17	013019	Spina	Pin	Stift	Goupille
18	014145	Vite	Screw	Schraube	Vis
19	661401	Fusello	Stub axle	Flansch	Fusee
20	412782	Dente (da saldare)	Tine (to be welded)	Zahn (zum schweissen)	Dent (à souder)
<b>420</b>	961921	Rullo packer	Packer roller	Packerwalze	Rouleau packer
<b>470</b>	961922	Rullo packer	Packer roller	Packerwalze	Rouleau packer
<b>520</b>	961923	Rullo packer	Packer roller	Packerwalze	Rouleau packer
<b>420</b>	961911	Barra porta raschietti	Scratcher support	Schaberhalter	Porte-racloir
<b>470</b>	961912	Barra porta raschietti	Scratcher support	Schaberhalter	Porte-racloir
<b>520</b>	961913	Barra porta raschietti	Scratcher support	Schaberhalter	Porte-racloir
23	911629	Raschietto laterale SX	Scraper	Schaber	Racloir
24	912687	Braccio	Arm	Arm	Bras
25	099018	Gruppo parapolvere	Dust cover	Staubdeckel	Cache anti poussière
26	008005	Ingrassatore	Grease nipple	Fettbuechse	Graisneur
27	421604	Supporto	Support	Halterung	Support



RULLO PACKER Ø 406 DESTRO • R.H. PACKER ROLLER Ø 406  
PACKERWALZE Ø 406 RECHTS • ROULEAU PACKER Ø 406 DROITE

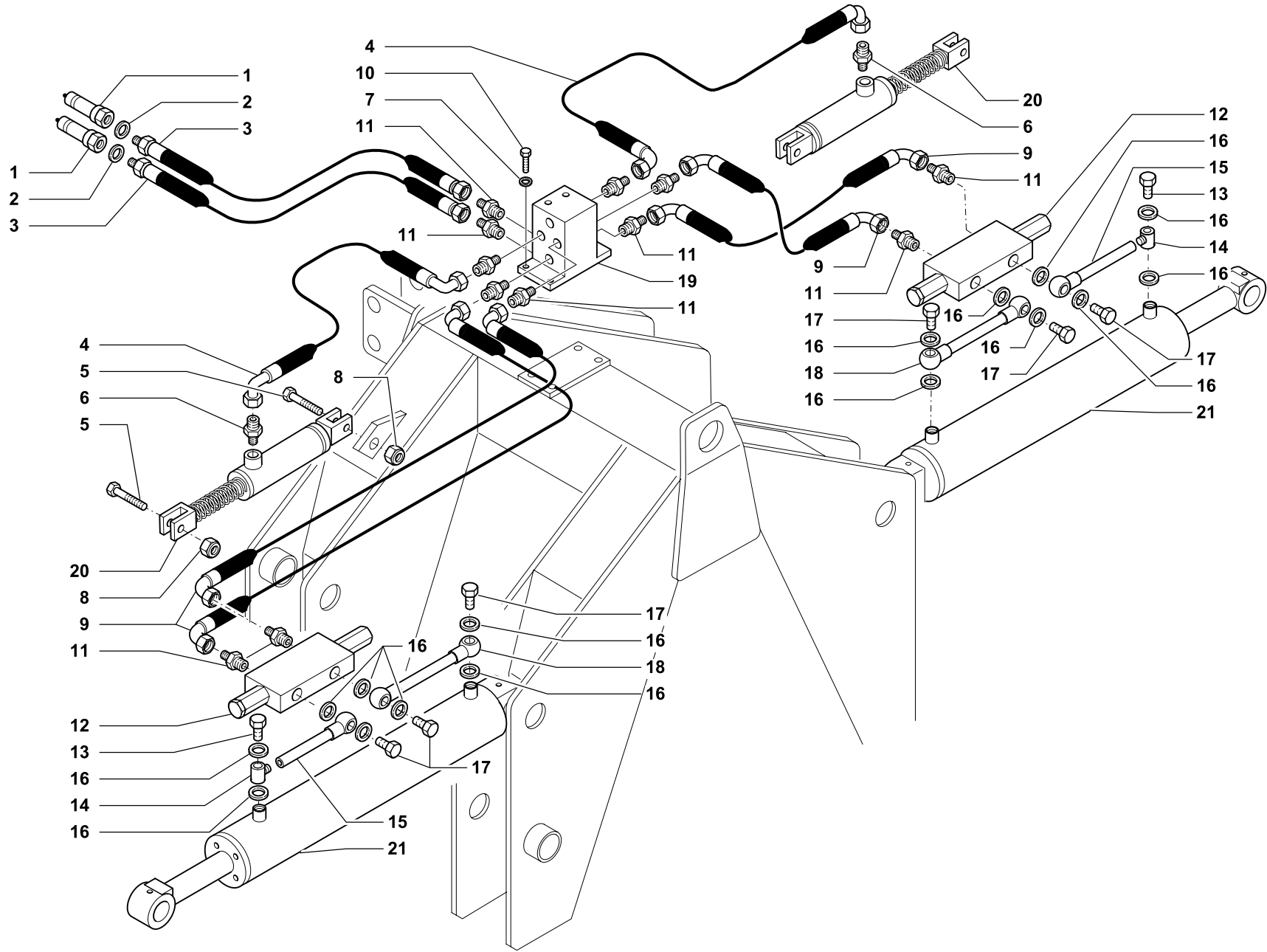
Tav.  
Tab.  
Taf.

118163

Rev.

02 0202

RIF.	N. CODICE	DENOMINAZIONE	DENOMINATION	BEZEICHNUNG	DENOMINATION
28	003051	Cuscinetto	Bearing	Kugellager	Roulement
29	001006	Anello di arresto	Stop ring	Sperring	Bague d'arret
30	014145	Vite	Screw	Schraube	Vis
31	011003	Grower	Grower	Federscheibe	Grower
32	014192	Vite	Screw	Schraube	Vis
33	014019	Vite	Screw	Schraube	Vis
34	911630	Raschietto laterale DX	Scraper	Schaber	Racloir
35	612372	Chiusura	Plate	Plate	Platte
36	661402	Piastra	Plate	Plate	Platte
37	004054	Dado	Nut	Mutter	Ecrou
38	014386	Vite	Screw	Schraube	Vis
39	004003	Dado	Nut	Mutter	Ecrou
40	004084	Dado	Nut	Mutter	Ecrou
41	014214	Vite	Screw	Schraube	Vis
42	004072	Dado	Nut	Mutter	Ecrou
43	661403	Bussola	Bush	Buchse	Bague
44	004054	Dado	Nut	Mutter	Ecrou
45	014176	Vite	Screw	Schraube	Vis
46	010006	Rondella	Washer	Unterlegscheibe	Rondelle

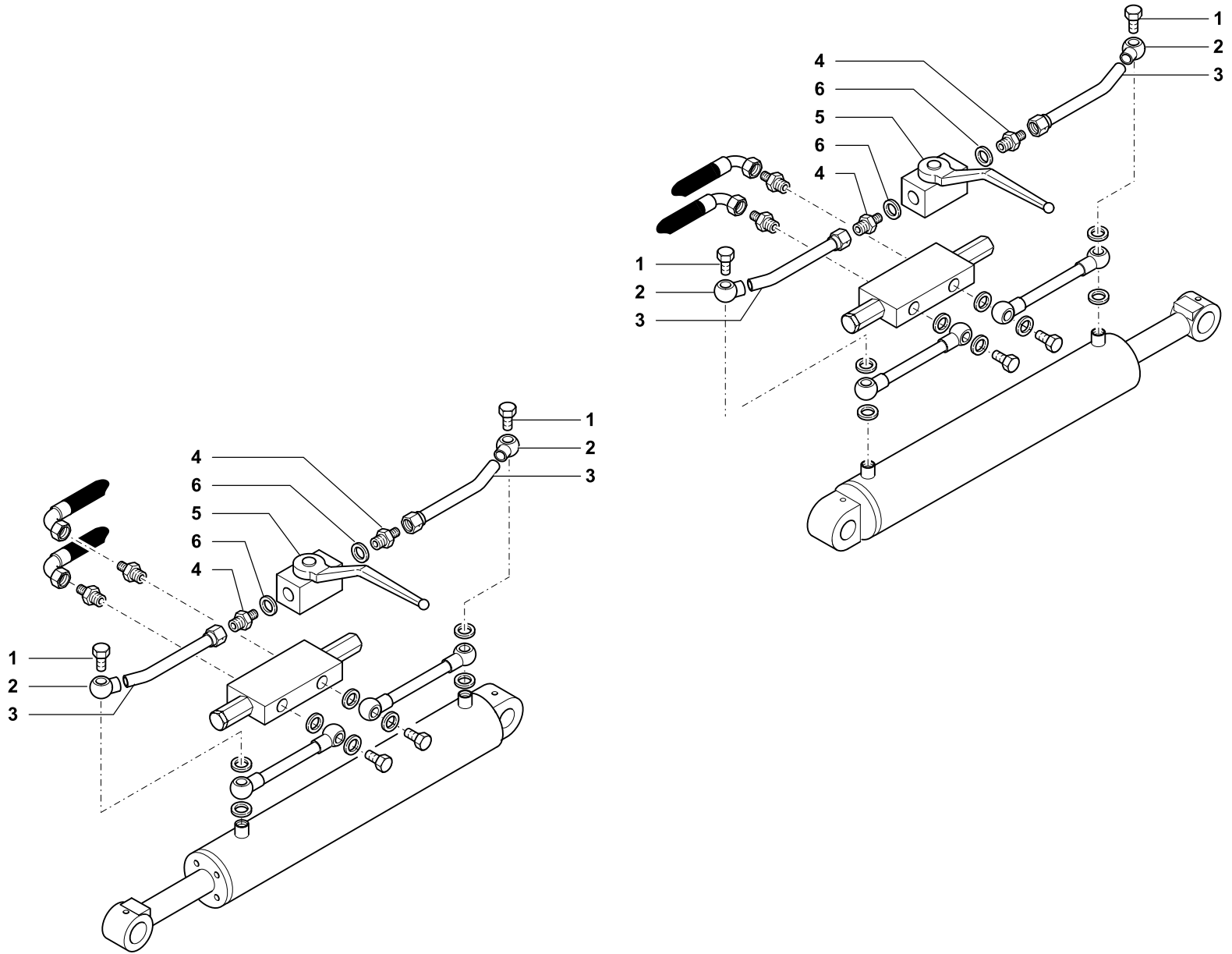


IMPIANTO IDRAULICO SOLLEVAMENTO FRESE/P • HYDRAULIC ADJUSTMENT FOR FOLDING ROTARY TILLERS • HYDRAULISCHE HÖHENVERSTELLANGE FÜR KLAPPBARE FRÄSEN • SYSTÈME HYDRAULIQUE DE SOULÈVEMENT POUR FRAISE REPLIABLE

Tav. Tab. Taf.	<b>118519</b>	Rev.	<b>00 0400</b>
----------------------	---------------	------	----------------



RIF.	N. CODICE	DENOMINAZIONE	DENOMINATION	BEZEICHNUNG	DENOMINATION
1	022082	Innesto rapido	Shap-on coupling	Baionett kupplung	Joint a baionette
2	022087	Rosetta di rame	Washer	Unterlegscheibe	Rondelle
3	023125	Tubo	Hose	Schlauch	Tuyau
4	023119	Tubo	Hose	Schlauch	Tuyau
5	014192	Vite	Screw	Schraube	Vis
6	022130	Raccordo	Connection	Anschluss	Raccord
7	010015	Rondella	Washer	Unterlegscheibe	Rondelle
8	004072	Dado	Nut	Mutter	Ecrou
9	023123	Tubo	Hose	Schlauch	Tuyau
10	014032	Vite	Screw	Schraube	Vis
11	022129	Raccordo	Connection	Anschluss	Raccord
12	021058	Valvola di blocco	Stop valve	Sperrventil	Suopape d'arret
13	022175	Vite strozzata	Screw	Schraube	Vis
14	022151	Raccordo	Connection	Anschluss	Raccord
15	621718	Tubo	Hose	Schlauch	Tuyau
16	022086	Rosetta di rame	Washer	Unterlegscheibe	Rondelle
17	022070	Vite forata	Screw	Schraube	Vis
18	621721	Tubo	Hose	Schlauch	Tuyau
19	662528	Blocchetto ripartitore	Connection block	Kontrolmechanismus	Distributeur
20	671777	Martinetto completo	Complete jack	Komplette winde	Vérin complet
21	671776	Martinetto di sollevamento	Complete jack	Komplette winde	Vérin complet



KIT SISTEMA FLOTTANTE • FLOATING SYSTEM  
SCHWINGSYSTEM • KIT SYSTEME FLOTANT

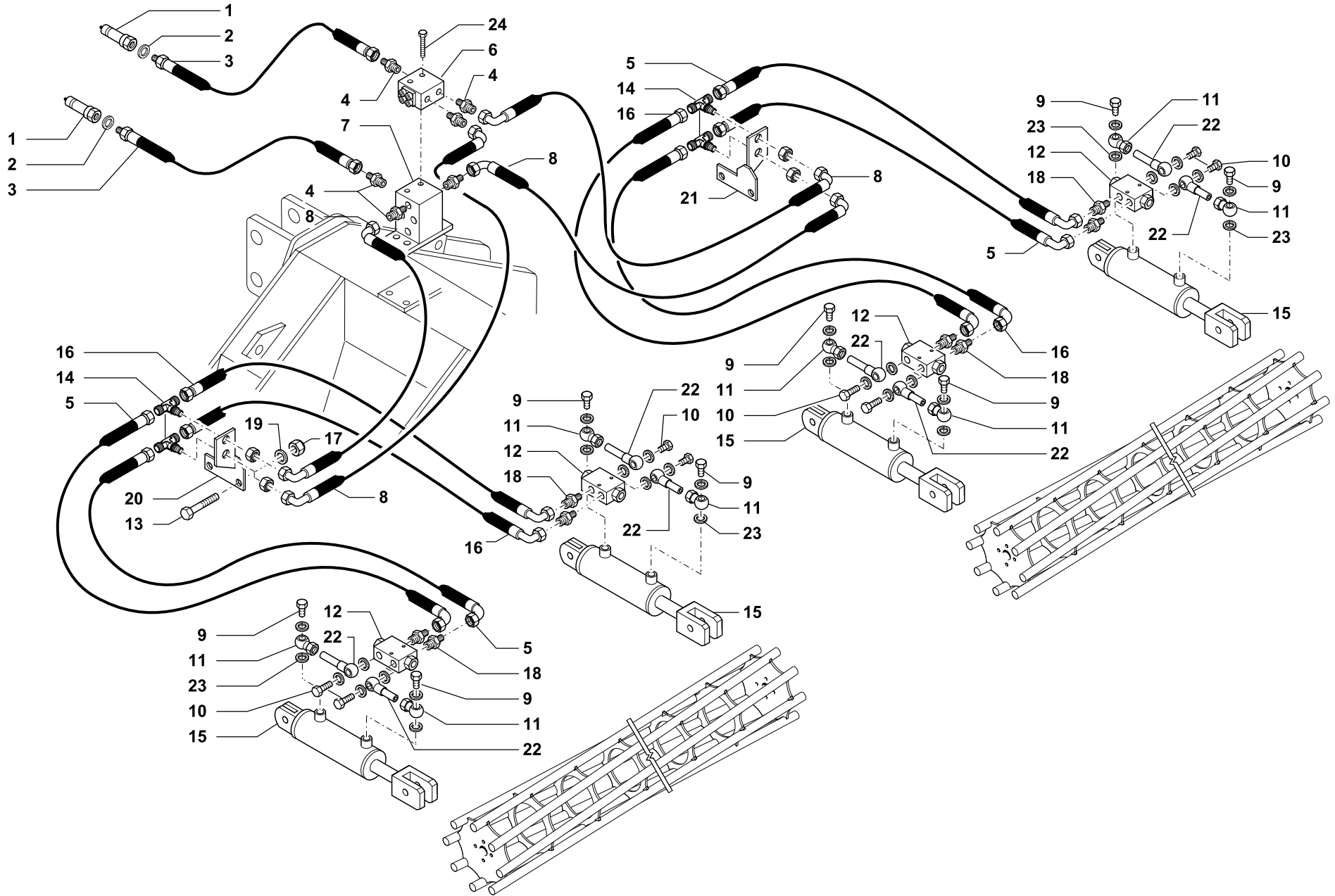
Tav.	120542	Rev.	00 0702
Tab.			
Taf.			



KIT SISTEMA FLOTTANTE • FLOATING SYSTEM  
SCHWINGSYSTEM • KIT SYSTEME FLOTANT

Tav. Tab. Taf.	<b>120542</b>	Rev.	<b>00</b>	<b>0702</b>
----------------------	---------------	------	-----------	-------------

RIF.	N. CODICE	DENOMINAZIONE	DENOMINATION	BEZEICHNUNG	DENOMINATION
1	022166	Vite forata	Screw	Schraube	Vis
2	022151	Occhio	Pipe fitting	Rohrverschraubung	Raccord
3	021181	Tubo	Hose	Schlauch	Tuyau
4	022129	Raccordo	Connection	Anschluss	Raccord
5	021172	Rubinetto	Tap	Ablasshahn	Robinet
6	022086	Rondella rame	Washer	Unterlegscheibe	Rondelle
	<b>971760</b>	Kit sistema flottante	Floating system	Schwingsystem	Kit systeme flotant



IMPIANTO IDRAULICO SOLLEVAMENTO RULLI • HYDRAULIC SYSTEM FOR ROLLER LIFTING  
 HYDRAULISCHE ANLAGE FÜR WALZE BETEETIGUNG • INSTALLATION HYDRAULIQUE REGLAGE ROULEAUX

Tav. Tab. Taf.	<b>118520</b>	Rev.	<b>01 0902</b>
----------------------	---------------	------	----------------

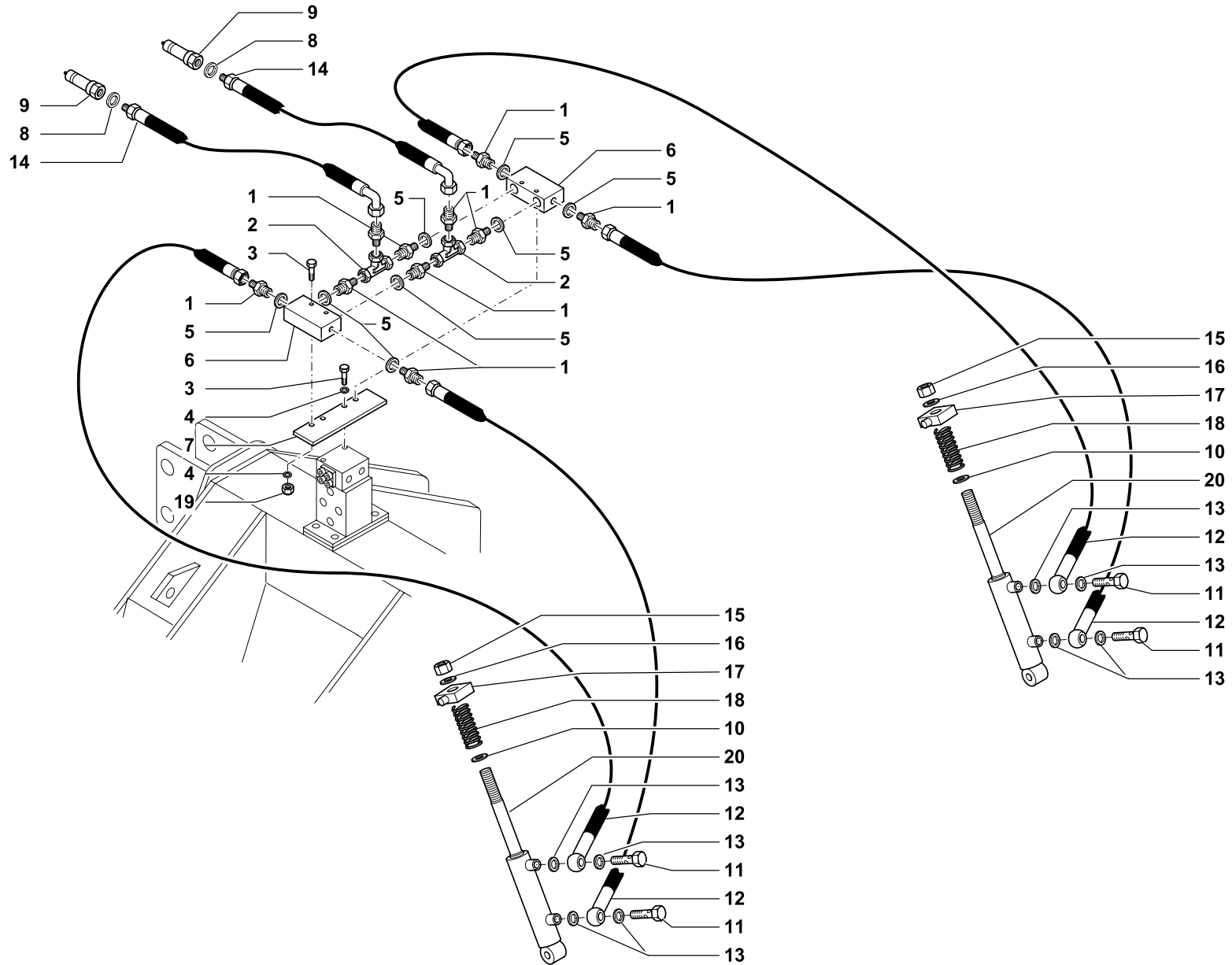


IMPIANTO IDRAULICO SOLLEVAMENTO RULLI • HYDRAULIC SYSTEM FOR ROLLER LIFTING  
HYDRAULISCHE ANLAGE FÜR WALZE BETEETIGUNG • INSTALLATION HYDRAULIQUE REGLAGE ROULEAUX

Tav.  
Tab.  
Taf. **118520**

Rev. **01 0902**

RIF.	N. CODICE	DENOMINAZIONE	DENOMINATION	BEZEICHNUNG	DENOMINATION
1	022082	Innesto rapido	Shap-on coupling	Baionett kupplung	Joint a baionette
2	022087	Rosetta di rame	Washer	Unterlegscheibe	Rondelle
3	023125	Tubo	Hose	Schlauch	Tuyau
4	022129	Raccordo	Connection	Anschluss	Raccord
<b>420-470</b>	5	023154	Tubo	Hose	Tuyau
<b>520</b>		023152	Tubo	Hose	Tuyau
6	021073	Divisore di flusso	Flow divider	Flussteiler	Diviseur de flux
7	662528	Blocchetto ripartitore	Connection block	Kontrolmechanismus	Distributeur
8	023153	Tubo	Hose	Schlauch	Tuyau
9	022175	Vite strozzata	Screw	Schraube	Vis
10	022070	Vite cava	Screw	Schraube	Vis
11	022151	Raccordo	Connection	Anschluss	Raccord
12	021087	Valvola di blocco	Stop valve	Sperrventil	Suopape d'arret
13	014176	Vite	Screw	Schraube	Vis
14	022178	Raccordo	Connection	Anschluss	Raccord
15	<b>471444</b>	Martinetto completo	Complete jack	Komplette winde	Vérin complet
	<b>471842</b>	Kit guarnizioni martinetto	Hydraulic ram seal group	Dichtungsgruppe	Groupe d'étancheite
16	023152	Tubo	Hose	Schlauch	Tuyau
17	004054	Dado	Nut	Mutter	Ecrou
18	022129	Raccordo	Connection	Anschluss	Raccord
19	010002	Rondella	Washer	Unterlegscheibe	Rondelle
20	461098	Supporto valvola sinistro	Support	Halterung	Support
21	461099	Supporto valvola destro	Support	Halterung	Support
22	621736	Tubo valvola	Hose	Schlauch	Tuyau
23	022086	Rosetta di rame	Washer	Unterlegscheibe	Rondelle
24	014122	Vite	Screw	Schraube	Vis
	<b>971534</b>	Kit valvole di blocco	Kit stop valve	Sperrventil	Suopape d'arret



**KIT MARTINETTI IDRAULICI SOLLEVAMENTO VENTOLA • HYDRAULIC RAMS KIT FOR TAILGATE ADJUSTMENT  
 SATZ HYDRAULISCHER WINDEN ZUR HECKKLAPPENVERSTELLUNG • REGLAGE HYDRAULIQUE DU TABLIER**

Tav. **118521**  
 Tab.  
 Taf.

Rev. **00 0400**



KIT MARTINETTI IDRAULICI SOLLEVAMENTO VENTOLA • HYDRAULIC RAMS KIT FOR TAILGATE ADJUSTMENT  
SATZ HYDRAULISCHER WINDEN ZUR HECKKLAPPENVERSTELLUNG • REGLAGE HYDRAULIQUE DU TABLIER

Tav.  
Tab.  
Taf.

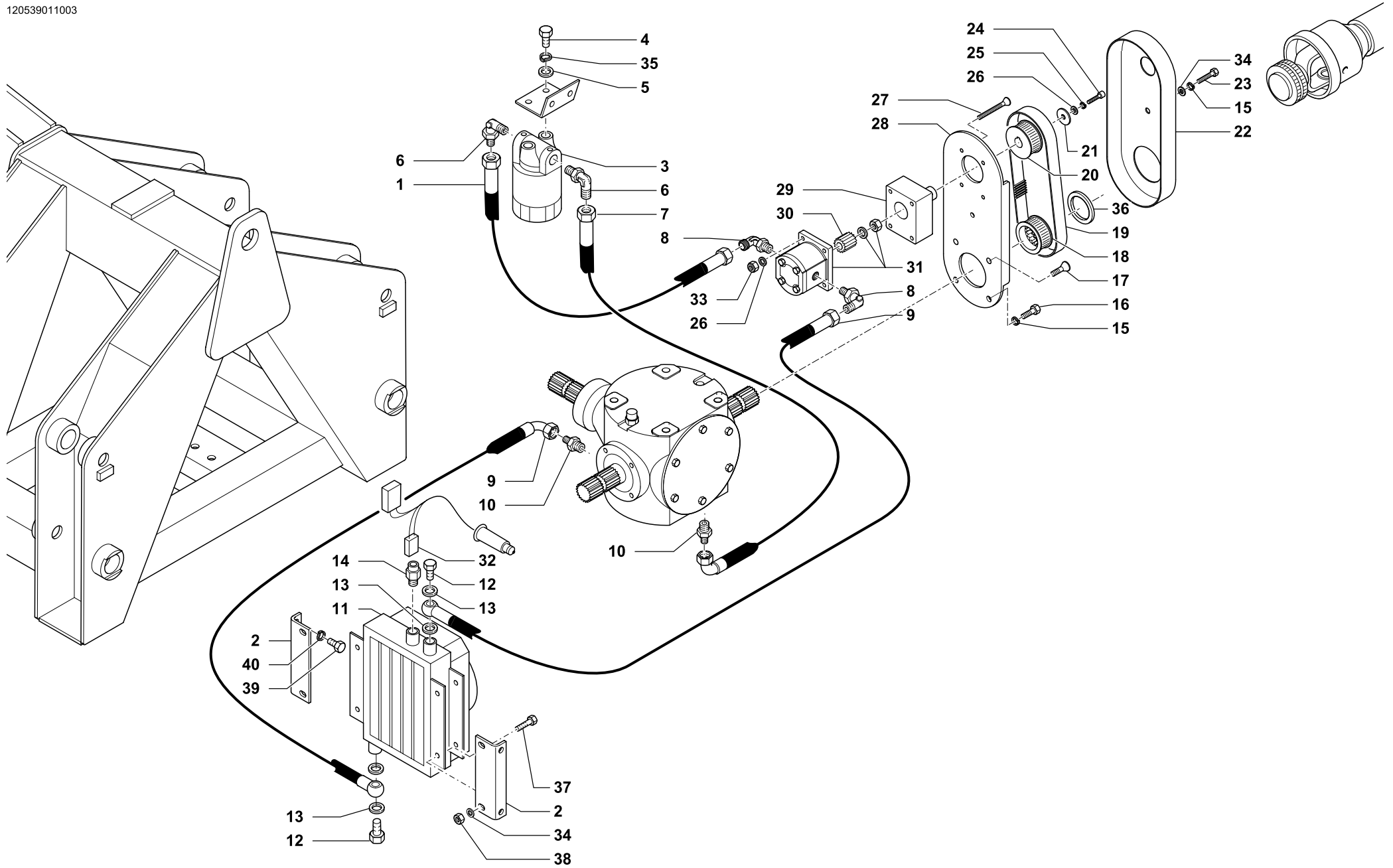
118521

Rev.

00

0400

RIF.	N. CODICE	DENOMINAZIONE	DENOMINATION	BEZEICHNUNG	DENOMINATION
1	022104	Riduzione	Nipple	Nippel	Reduction
2	023142	Raccordo	Connection	Anschluss	Raccord
3	014121	Vite	Screw	Schraube	Vis
4	010015	Rondella	Washer	Unterlegscheibe	Rondelle
5	022085	Rondella	Washer	Unterlegscheibe	Rondelle
6	021069	Valvola controllo discesa	Stop valve	Sperrventil	Suopape d'arret
7	421767	Supporto	Support	Halterung	Support
8	022087	Rondella	Washer	Unterlegscheibe	Rondelle
9	022082	Innesto rapido	Shap-on coupling	Baionett kupplung	Joint a baionette
10	010012	Rondella	Washer	Unterlegscheibe	Rondelle
11	022175	Vite strozzata	Screw	Schraube	Vis
12	023060	Tubo	Hose	Schlauch	Tuyau
13	022086	Rondella	Washer	Unterlegscheibe	Rondelle
14	023064	Tubo	Hose	Schlauch	Tuyau
15	004073	Dado	Nut	Mutter	Ecrou
16	010009	Rondella	Washer	Unterlegscheibe	Rondelle
17	923587	Supporto	Support	Halterung	Support
18	923505	Molla	Spring	Feder	Ressort
19	004023	Dado	Nut	Mutter	Ecrou
20	<b>971525</b>	Martinetto completo	Complete jack	Komplette winde	Vérin complet



KIT DI RAFFREDDAMENTO • COOLING KIT  
 KUEHLUNGSKIT • KIT DE REFRROIDISSEMENT

Tav.	<b>120539</b>	Rev.	<b>01 1003</b>
Tab.			
Taf.			



KIT DI RAFFREDDAMENTO • COOLING KIT  
KUEHLUNGSKIT • KIT DE REFROIDISSEMENT

Tav.  
Tab.  
Taf.

120539

Rev.

01

1003

RIF.	N. CODICE	DENOMINAZIONE	DENOMINATION	BEZEICHNUNG	DENOMINATION
1	023115	Tubo	Hose	Schlauch	Tuyau
2	612399	Supporto	Support	Halterung	Support
3	021052	Filtro	Filter	Filer	Filtre
4	014005	Vite	Screw	Schraube	Vis
5	010023	Rondella	Washer	Unterlegscheibe	Rondelle
6	022119	Raccordo	Connection	Anschluss	Raccord
7	023175	Tubo	Hose	Schlauch	Tuyau
8	022120	Raccordo	Connection	Anschluss	Raccord
9	023130	Tubo	Hose	Schlauch	Tuyau
10	022159	Raccordo	Connection	Anschluss	Raccord
11	021055	Scambiatore	Exchange	Waermeaustauscher	Echangeur
12	022030	Vite	Screw	Schraube	Vis
13	010015	Rondella	Washer	Unterlegscheibe	Rondelle
14	021061	Termostato	Thermostat	Thermostat	Thermostat
15	011032	Grower	Grower	Federscheibe	Grower
16	014007	Vite	Screw	Schraube	Vis
17	014320	Vite	Screw	Schraube	Vis
18	423606	Puleggia inferiore	Pulley	Riemenscheibe	Poulie
19	021083	Cinghia	Trasmission belt	Gurt	Courroie
20	423605	Puleggia superiore	Pulley	Riemenscheibe	Poulie
21	010035	Rondella	Washer	Unterlegscheibe	Rondelle
22	461090	Coperchio carter	Cover	Deckel	Couvercle
23	014026	Vite	Screw	Schraube	Vis
24	014306	Vite	Screw	Schraube	Vis
25	011009	Grower	Grower	Federscheibe	Grower
26	010015	Rondella	Washer	Unterlegscheibe	Rondelle
27	014393	Vite	Screw	Schraube	Vis
28	421535	Supporto carter	Support	Halterung	Support
29	021078	Supporto	Support	Halterung	Support
30	021079	Semigiunto	Hub	Moyeu	Nabe
32	027001	Cavo alimentatore	Cable feeder	Speiseleitung	Fil alimentation
33	004083	Dado	Nut	Mutter	Ecrou
34	010004	Rondella	Washer	Unterlegscheibe	Rondelle
35	011001	Grower	Grower	Federscheibe	Grower



KIT DI RAFFREDDAMENTO • COOLING KIT  
KUEHLUNGSKIT • KIT DE REFROIDISSEMENT

Tav.  
Tab.  
Taf.

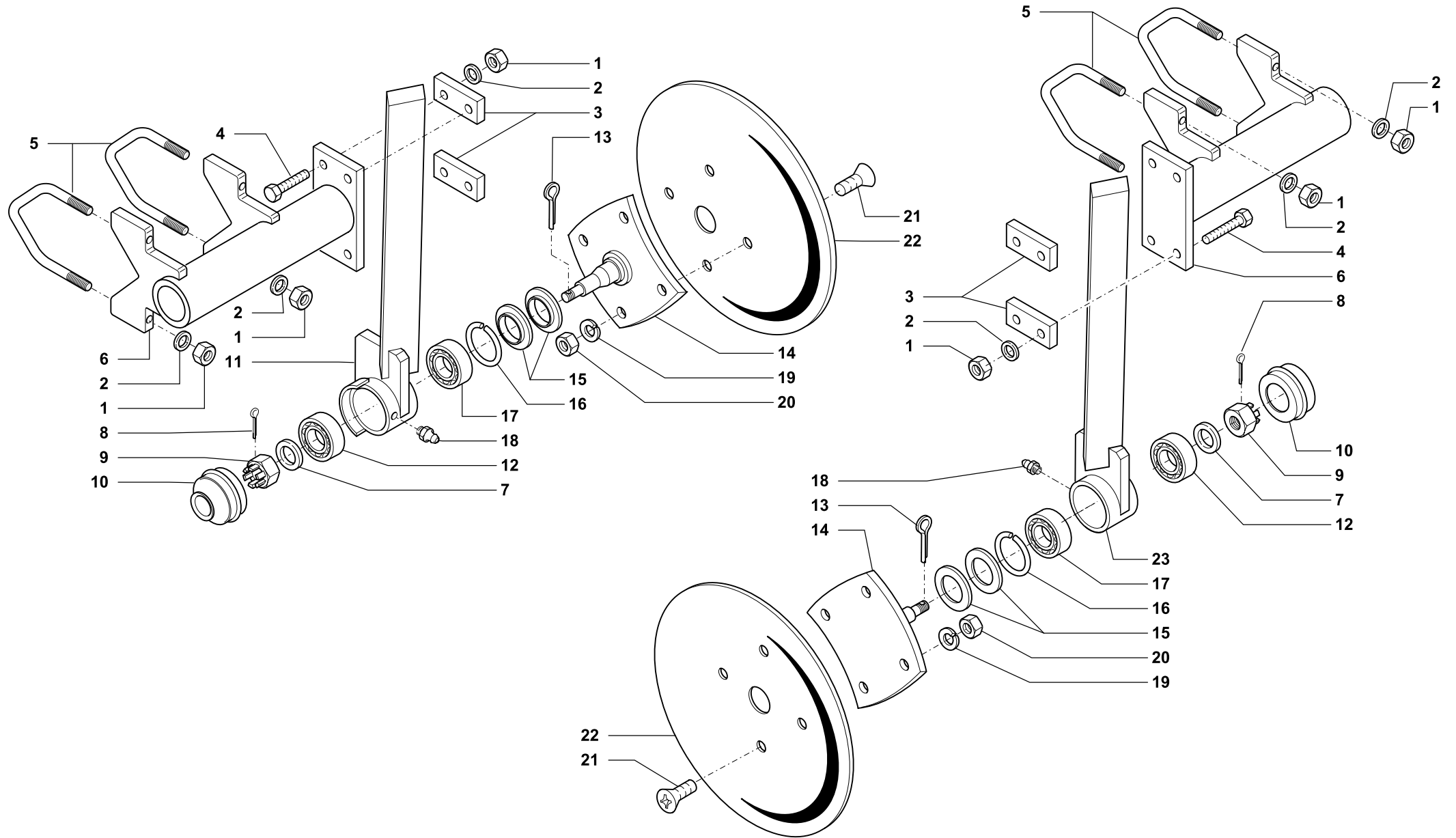
**120539**

Rev.

**01**

**1003**

RIF.	N. CODICE	DENOMINAZIONE	DENOMINATION	BEZEICHNUNG	DENOMINATION
36	223405	Spessore	Spacer	Distanzstueck	Entretoise
37	014205	Vite	Screw	Schraube	Vis
38	004058	Dado	Nut	Mutter	Ecrou
39	014279	Vite	Screw	Schraube	Vis
40	011009	Grower	Grower	Federscheibe	Grower
	<b>971529</b>	Kit raffreddamento	Cooling kit	Kuehlungskit	Kit de refroidissement



DISCHI CONVOGLIATORI • CONVEYOR DISC  
 VORNE FÖDERERSCHRAUBE • DISQUES CONVOYEURS

Tav. Tab. Taf.	<b>138110</b>	Rev.	<b>01 0202</b>
----------------------	---------------	------	----------------



DISCHI CONVOGLIATORI • CONVEYOR DISC  
VORNE FÖDERERSCHRAUBE • DISQUES CONVOYEURS

Tav.  
Tab.  
Taf.

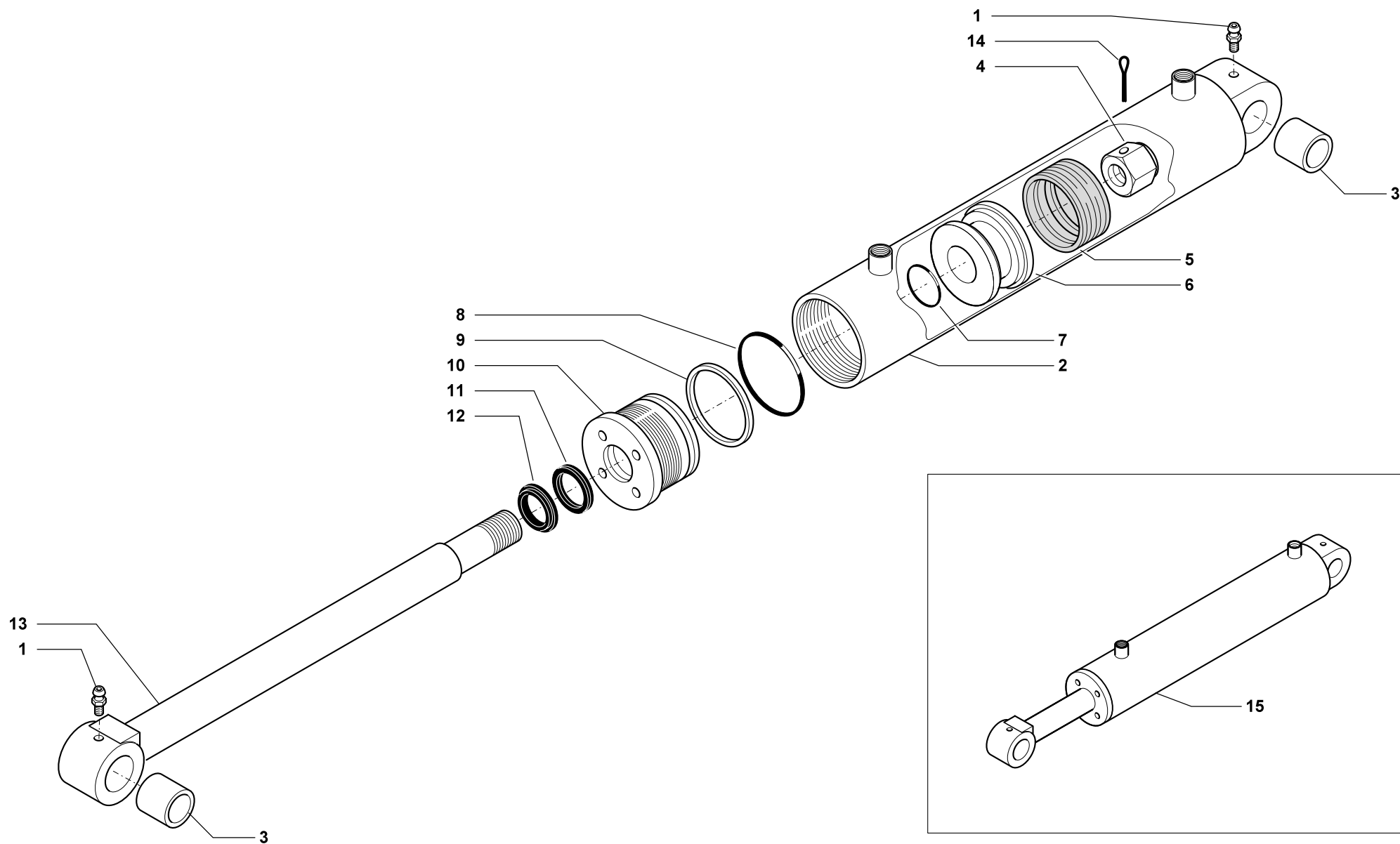
138110

Rev.

01

0202

RIF.	N. CODICE	DENOMINAZIONE	DENOMINATION	BEZEICHNUNG	DENOMINATION
1	004063	Dado	Nut	Mutter	Ecrou
2	010006	Rondella	Washer	Unterlegscheibe	Rondelle
3	923690	Piastra	Plate	Plate	Platte
4	014241	Vite	Screw	Schraube	Vis
5	923511	Cavallotto	U bolt	Bügelbolzen	Crampillon
6	961693	Supporto portadisco	Support	Halterung	Support
7	010009	Rondella	Washer	Unterlegscheibe	Rondelle
8	002014	Copiglia	Split pin	Hohlstift	Goupille
9	004080	Dado	Nut	Mutter	Ecrou
10	015008	Coperchio	Cover	Deckel	Couvercle
11	961697	Supporto sinistro	Support	Halterung	Support
12	003087	Cuscinetto	Bearing	Kugellager	Roulement
13	002013	Copiglia	Split pin	Hohlstift	Goupille
14	961524	Fusello	Drive hub	Nabe	Fusee
15	099017	Parapolvere	Dust cover	Staubdeckel	Cache anti poussière
16	001031	Anello di arresto	Stop ring	Sperring	Bague d'arret
17	003073	Cuscinetto	Bearing	Kugellager	Roulement
18	008002	Ingrassatore	Grease nipple	Fettbuechse	Graisser
19	011002	Grower	Washer	Federring	Rondelle
20	004002	Dado	Nut	Mutter	Ecrou
21	014155	Vite	Screw	Schraube	Vis
22	099030	Disco frangizolle	Disc	Scheibe	Disque
23	961696	Supporto destro	Support	Halterung	Support
	<b>971511</b>	Dischi convogliatori anteriori	Front conveyor disc	Vorne födererschraube	Disques convoyeurs arriere



MARTINETTO DI SOLLEVAMENTO • LIFTING JACK  
 HEBEBOCK • VERIN DE REPLIAGE



Tav.	124202	Rev.	01 0699
Tab.			
Taf.			



MARTINETTO DI SOLLEVAMENTO • LIFTING JACK  
HEBEBOCK • VERIN DE REPLIAGE

Tav.  
Tab.  
Taf.

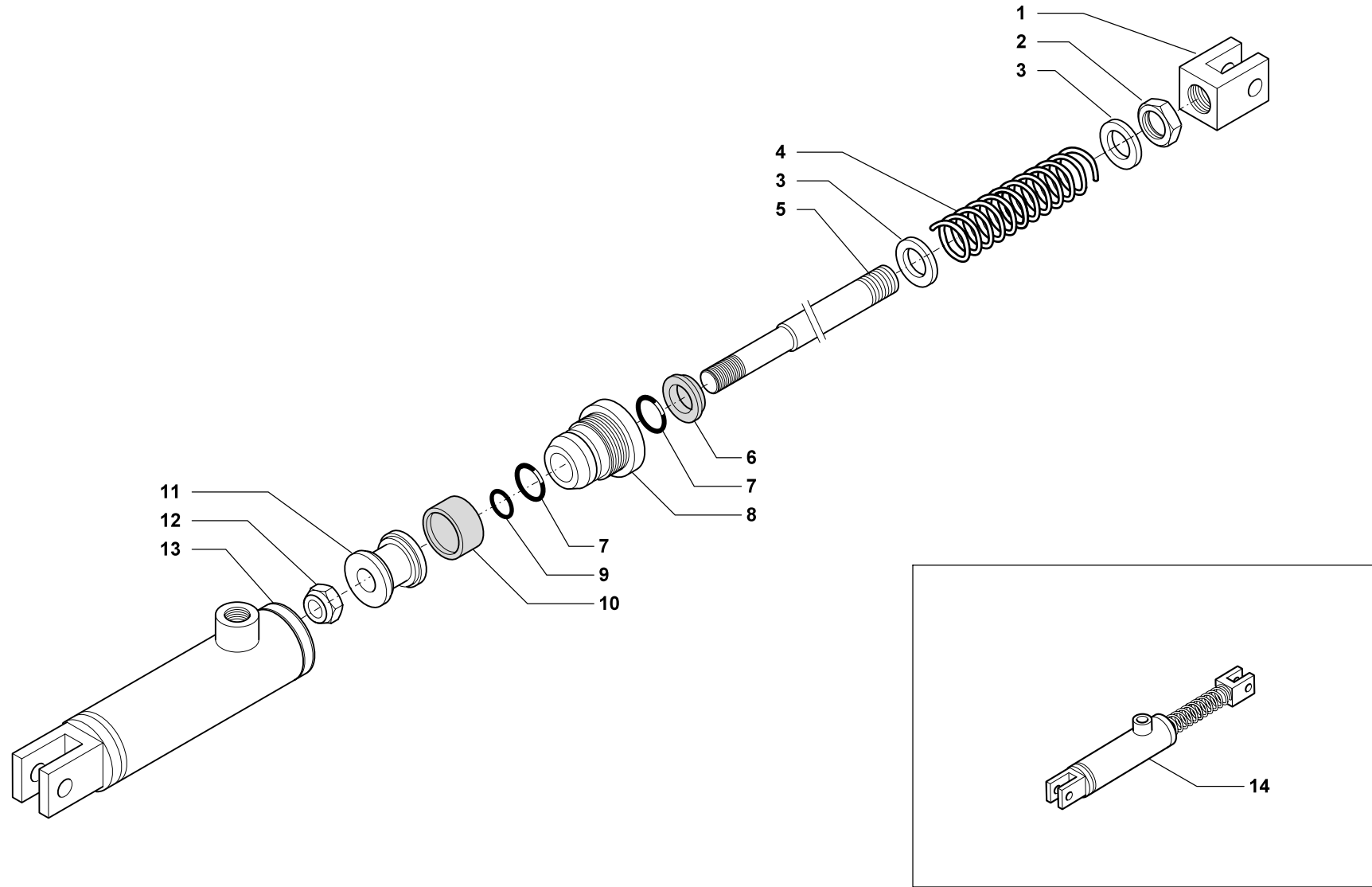
**124202**

Rev.

**01**

**0699**

RIF.	N. CODICE	DENOMINAZIONE	DENOMINATION	BEZEICHNUNG	DENOMINATION
1	008007	Ingrassatore	Grease nipple	Fettbuechse	Graisneur
2	662541	Cilindro	Cylinder	Zylinder	Cylindre
3	099066	Boccola	Bushing	Buchse	Douille
4	004056	Dado	Nut	Mutter	Ecrou
5	007190	Guarnizione	Gasket	Dichtring	Joint
6	623805	Pistone	Piston	Kolben	Piston
7	007181	Guarnizione	Gasket	Dichtring	Joint
8	007192	Guarnizione	Gasket	Dichtring	Joint
9	022126	Anello	Ring	Ring	Bague
10	623802	Testata	Cylinder head	Zylinderkopf	Culasse
11	007193	Guarnizione	Gasket	Dichtring	Joint
12	007194	Guarnizione	Gasket	Dichtring	Joint
13	662540	Stelo	Rod	Spindel	Tige
14	002017	Copiglia	Split pin	Hohlstift	Goupille
15	<b>671776</b>	Martinetto completo	Complete jack	Komplette winde	Vérin complet





MARTINETTO AZIONAMENTO GANCIO DI BLOCCAGGIO • BLOCKING HOOK COMMANDING JACK  
SPERREHACKEN ANTRIEB WINDE • VERIN CROCHET DE BLOCCAGE

Tav.  
Tab.  
Taf.

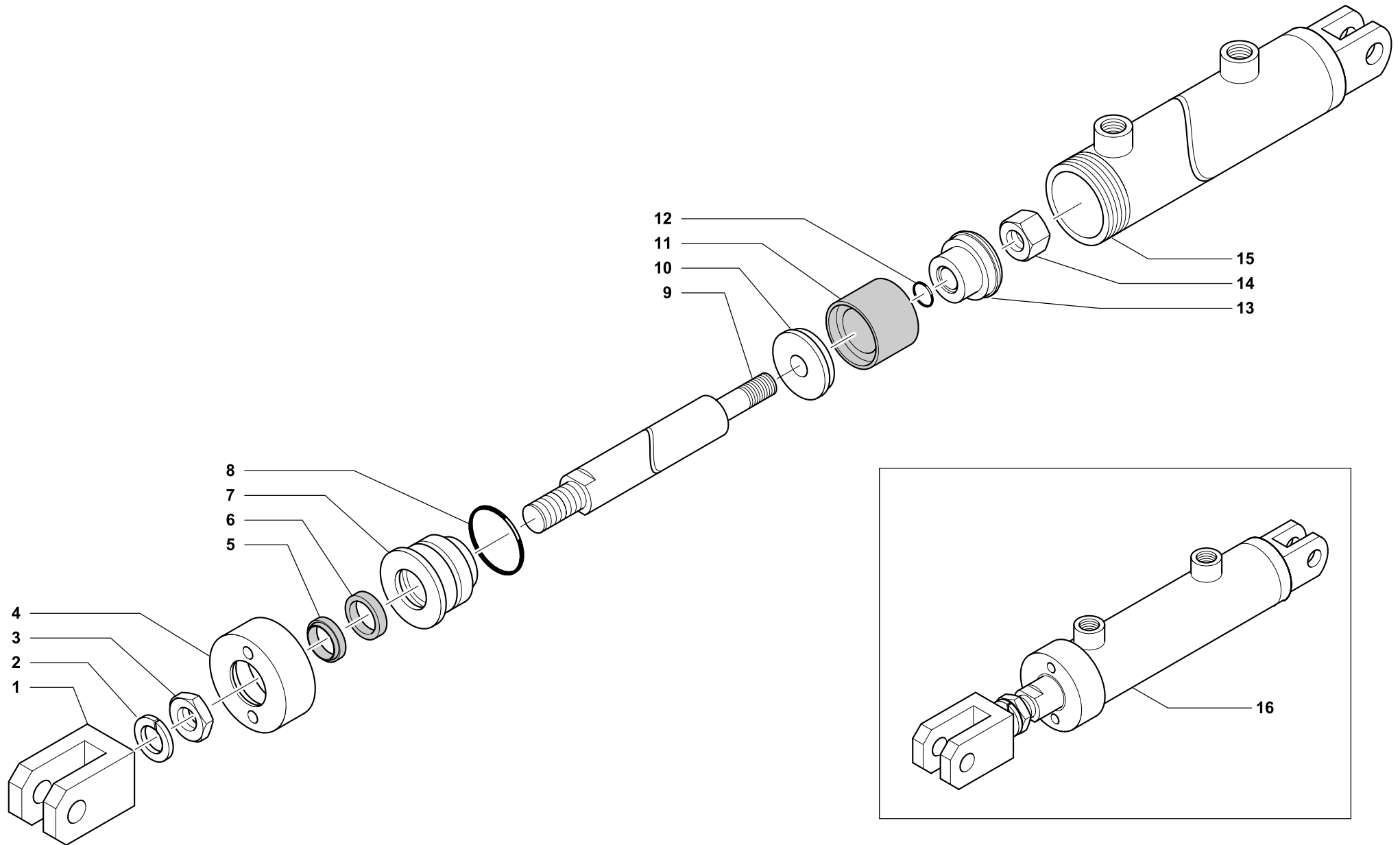
**124206**

Rev.

**01**

**0699**

RIF.	N. CODICE	DENOMINAZIONE	DENOMINATION	BEZEICHNUNG	DENOMINATION
1	623611	Forcella filettata	Fork	Gabelstueck	Fourche
2	004040	Dado	Nut	Mutter	Ecrou
3	010006	Rondella	Washer	Unterlegscheibe	Rondelle
4	423557	Molla	Spring	Feder	Ressort
5	623810	Stelo	Rod	Spindel	Tige
6	007198	Guarnizione	Gasket	Dichtring	Joint
7	007196	Guarnizione	Gasket	Dichtring	Joint
8	623809	Guida stelo	Stem guide	Schaftsführung	Guide axe
9	007197	Guarnizione	Gasket	Dichtring	Joint
10	007191	Guarnizione	Gasket	Dichtring	Joint
11	623808	Pistone	Piston	Kolben	Piston
12	004087	Dado	Nut	Mutter	Ecrou
13	662544	Tubo	Hose	Schlauch	Tuyau
14	<b>671777</b>	Martinetto completo	Complete jack	Komplette winde	Vérin complet



MARTINETTO REGOLAZIONE RULLO • ROLLER ADJUSTMEN JACK  
 KOMPLETTE WINDE REGULIERUNG WALZE • VERIN DE REGLAGE ROULEAUX

Tav.	<b>120221</b>	Rev.	<b>00 1000</b>
Tab.			
Taf.			



MARTINETTO REGOLAZIONE RULLO • ROLLER ADJUSTMEN JACK  
KOMPLETTE WINDE REGULIERUNG WALZE • VERIN DE REGLAGE ROULEAUX

Tav.  
Tab.  
Taf.

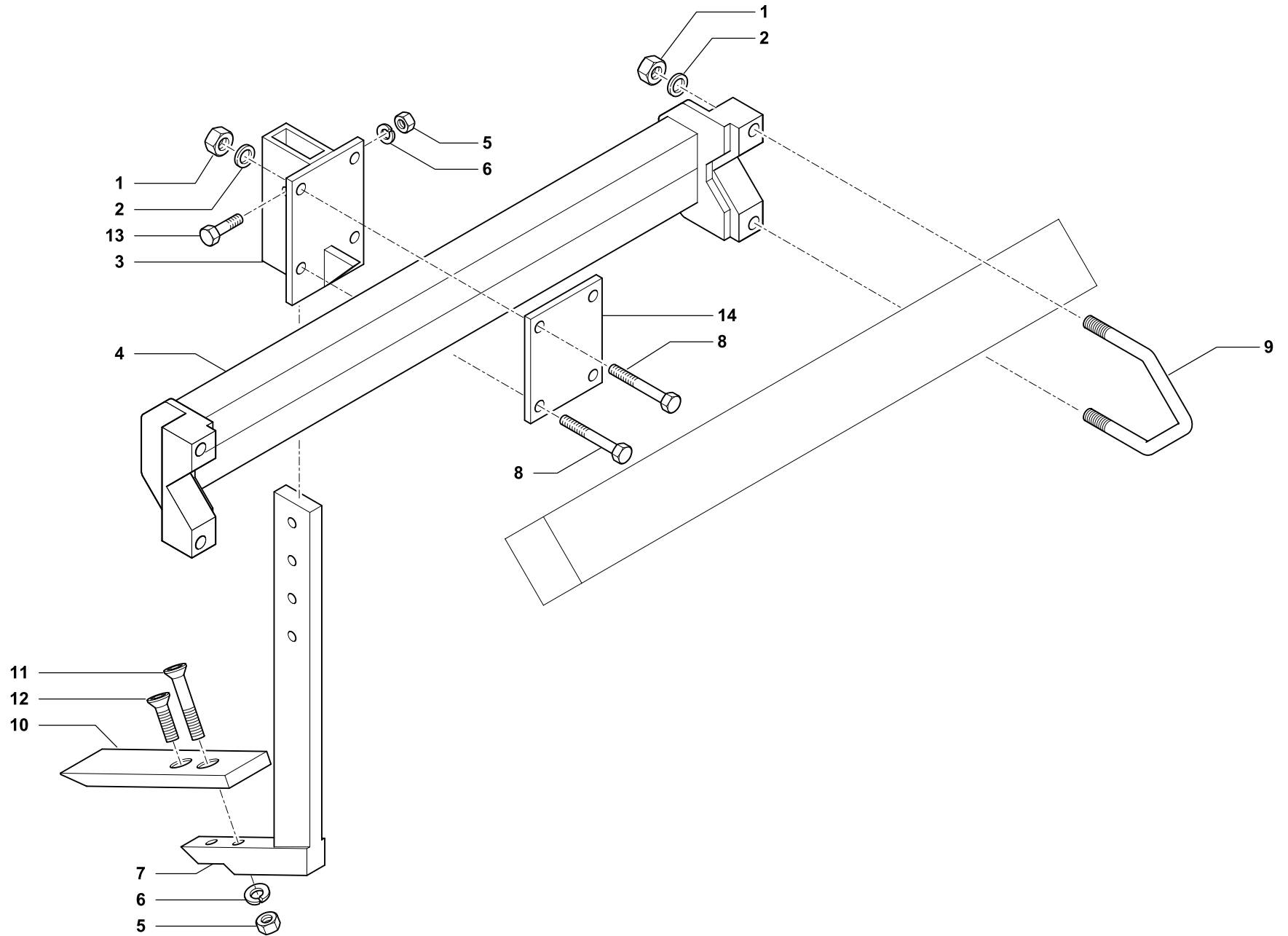
120221

Rev.

00

1000

RIF.	N. CODICE	DENOMINAZIONE	DENOMINATION	BEZEICHNUNG	DENOMINATION
1	623818	Forcella	Fork	Gabelstueck	Fourche
2	011010	Grower	Grower	Federscheibe	Grower
3	004027	Dado	Nut	Mutter	Ecrou
4	662543	Ghiera guida stelo	Ring nut	Nutmutter	Collier
5	007177	Guarnizione	Gasket	Dichtring	Joint
6	007178	Guarnizione	Gasket	Dichtring	Joint
7	662545	Guida stelo	Guide	Fuehrung	Guide
8	007168	Guarnizione OR	Gasket OR	Dichtring OR	Joint OR
9	423239	Stelo	Rod	Spindel	Tige
10	423197	Semicorpo pistone	Half piston	Halber Kolben	Demi corps piston
11	007165	Guarnizione	Gasket	Dichtring	Joint
12	007058	Guarnizione OR	Gasket OR	Dichtring OR	Joint OR
13	423196	Pistone	Piston	Kolben	Piston
14	004072	Dado	Nut	Mutter	Ecrou
15	461464	Cilindro	Cylinder	Zylinder	Cilindre
16	<b>471444</b>	Martinetto completo	Complete jack	Komplette winde	Vérin complet



**ROMPITRACCIA • LOOSENING TINE**  
**SPURLOCKERER • BRISE TRACES**

Tav.	<b>120650</b>	Rev.	<b>02 1002</b>
Tab.			
Taf.			



ROMPITRACCIA • LOOSENING TINE  
SPURLOCKERER • BRISE TRACES

Tav.  
Tab.  
Taf.

**120650**

Rev.

**02**

**1002**

RIF.	N. CODICE	DENOMINAZIONE	DENOMINATION	BEZEICHNUNG	DENOMINATION
1	004009	Dado	Nut	Mutter	Ecrou
2	010006	Rondella	Washer	Unterlegscheibe	Rondelle
3	461358	Supporto	Support	Halterung	Support
4	461095	Attacco	Hitch	Anhängung	Fixation
5	004003	Dado	Nut	Mutter	Ecrou
6	011003	Grower	Grower	Federscheibe	Grower
7	961549	Ancora per rompitraccia	Ripper leg	Ripper	Ripper
8	014181	Vite	Screw	Schraube	Vis
9	923511	Cavallotto	U bolt	Bügelbolzen	Crampillon
10	823560	Scalpello	Blade	Messer	Burin plat
11	014268	Vite	Screw	Schraube	Vis
12	014273	Vite	Screw	Schraube	Vis
13	014078	Vite	Screw	Schraube	Vis
14	411713	Contropiastra	Plate	Teller	Plateau
	<b>971761</b>	Kit rompitraccia	Loosening tine kit	Satz Spurlockerer	Kit brise traces